

SALTER®

SINCE 1760

Digital Multi Vac

Twice the suction of other
cordless vacuum cleaners**



**Compared to Salter 2 in 1
Cordless Multi Vac SAL0028

Please retain instructions for future reference.

Safety Instructions

When using electrical appliances, basic safety precautions should always be followed.

Check that the voltage indicated on the rating plate corresponds with that of the local network before connecting the appliance to the mains power supply.

Children aged from 8 years and people with reduced physical, sensory or mental capabilities or lack of experience and knowledge can use this appliance, only if they have been given supervision or instruction concerning use of the appliance in a safe way and understand the hazards involved.

Children should be supervised to ensure that they do not play with the appliance.

Unless they are older than 8 and supervised, children should not perform cleaning or user maintenance.

If the power supply cord, plug or any part of the appliance is malfunctioning or if it has been dropped or damaged, cease using the product immediately to avoid potential injury.

This appliance contains no user serviceable parts, only a qualified electrician should carry out repairs. Improper repairs may place the user at risk of harm.

Do not remove the adaptor from the mains power supply by pulling the cord; switch off and remove the plug by hand.

Do not use the adaptor to recharge non-rechargeable batteries or any other appliance.

Do not use the appliance for anything other than its intended use.

Take care when equipping accessories with rotating parts as this could cause entrapment.

Switch off the appliance, disconnect it from the mains power supply and allow to cool fully before changing or fitting accessories and before cleaning or user maintenance. Use of an extension cord with the appliance is not recommended. Only use the appliance with the power supply unit provided. This appliance should not be operated by means of an external timer or separate remote control system. This appliance is intended for domestic use only. It should not be used for commercial purposes.

Battery Safety

The supply terminals are not to be short-circuited. In the event of a battery pack leaking, do not allow the liquid to come in contact with the skin or eyes. If contact has been made, wash the affected area with copious amounts of water and seek medical advice. Secondary cells and batteries need to be charged before use. After extended periods of storage, it may be necessary to charge and discharge the battery pack several times to obtain maximum performance. Do not leave a battery pack on prolonged charge when not in use. Do not use any charger other than that specifically provided for use with the appliance. Do not use any cell or battery which is not designed for use with the appliance. Keep batteries out of the reach of children. Do not dispose of batteries in a fire. Do not dismantle, open or shred the battery pack. Do not expose cells or batteries to heat or fire. Do not crush, puncture, dismantle or otherwise damage the battery pack.

Do not store above 60 °C.

Avoid storage in direct sunlight.

Do not expose the battery pack to heat or fire as it may explode.

Do not subject the battery pack to mechanical shock.

Do not dispose of the exhausted battery pack in household waste.

To dispose of the exhausted battery pack, take it to a local recycling station. Contact the local government offices for further details.

This appliance is fitted with a 29.6 V 2500 mAh Li-ion rechargeable battery.

Care and Maintenance

Wipe the external surface of the vacuum cleaner with a soft, damp cloth and allow to dry thoroughly.

Do not use any harsh or abrasive detergents or cleaning agents to clean any part of the vacuum cleaner.

Keep the washable filter clean and replace when it becomes worn.

CAUTION: The extension tube contains electrical connections. Do not use to suck up water. Do not immerse in water for cleaning. The extension tube should be checked regularly and must not be used if damaged.

Dos and Don'ts

DO:

Check that the washable filter is kept clear of obstruction. Make sure that the dust container and washable filter are cleaned regularly to preserve suction and prolong the life of the vacuum cleaner.

Clean the dust container and washable filter at least every three weeks with clean water to keep the vacuum cleaner working efficiently.

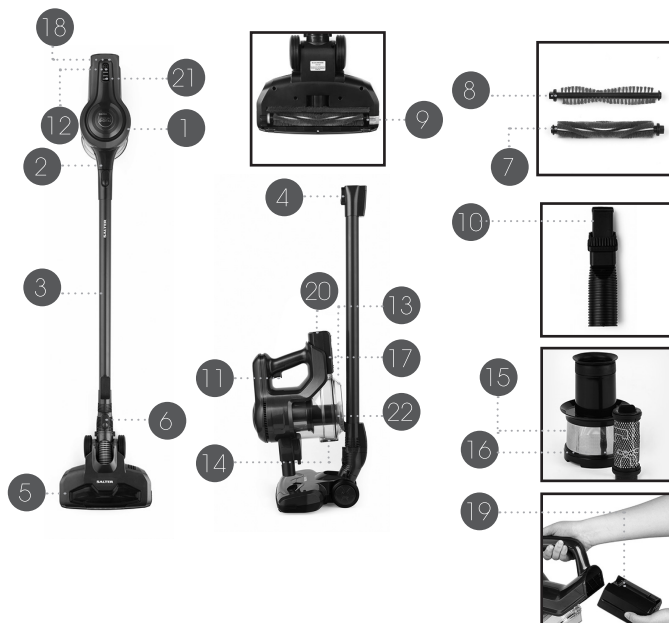
DON'T:

Use the vacuum cleaner without the washable filter or dust container in position.

Use the vacuum cleaner to pick up flammable liquid, matches, cigarette ends, hot ashes or any hot, burning or smoking objects.

Use the vacuum cleaner to pick up water or any other liquid, as this poses risk of an electric shock.

Description of Parts



- | | |
|-----------------------------------|---------------------------------------|
| 1. Digital Multi Vac main unit | 12. Boost button |
| 2. Air inlet | 13. Dust container |
| 3. Extension tube | 14. Dust container base release latch |
| 4. Extension tube release button | 15. Filter cone |
| 5. Floor brush | 16. Washable filter |
| 6. Floor brush release button | 17. Battery pack |
| 7. Soft bristle brush bar | 18. Battery release catch |
| 8. Firm bristle brush bar | 19. Battery indicator light |
| 9. Brush bar release tab | 20. Charging port |
| 10. 2 in 1 crevice and brush tool | 21. LED indicator light |
| 11. Power trigger | 22. Storage hook |

Instructions for Use

Before First Use

Before using the vacuum cleaner for the first time, clean the exterior surface with a soft, damp cloth and dry thoroughly.

Do not immerse the vacuum cleaner in water or any other liquid.

Charging the Digital Multi Vac

Before first use, the vacuum cleaner must be charged for approx. 5.5 hours.

Subsequent charging times will vary dependent upon use. If the vacuum cleaner battery becomes drained completely during use, it can take up to 5.5 hours to fully recharge.

STEP 1: Before connecting to the mains power supply, attach the battery pack to the vacuum cleaner main unit by aligning it with the vacuum cleaner main unit and sliding into place until it clicks.

STEP 2: Connect the mains power adaptor to the charging port on the battery pack.

STEP 3: Plug the mains power adaptor into the mains power supply; the LED indicator light will flash during charging and then remain illuminated once the battery is fully charged.

STEP 4: Once the battery is fully charged, unplug the mains power adaptor from the mains power supply. Disconnect the mains power adaptor from the charging port on the battery pack.

NOTE: Whilst charging, the battery pack may become warm. The battery pack does not need to be fitted onto the vacuum cleaner main unit during charging; it can be charged separately.

If charging the battery pack separately, the battery indicator lights will flash during charging and remain illuminated once fully charged.

The charge time may be extended by up to 1 hour if charging the battery immediately after use. This is due to activation of the heat safety protection device.

WARNING: Do not use any mains power adaptor other than that supplied. Using an alternative will increase the risk of damage to the vacuum cleaner or injury to the user. Do not leave the battery pack unattended whilst it is charging.

Using the Digital Multi Vac

STEP 1: Disconnect the vacuum cleaner from the mains power adaptor, making sure to unplug it from the mains power supply, and check that the battery pack is securely attached to the vacuum cleaner main unit.

STEP 2: Turn on the vacuum cleaner by pressing the power trigger; press the boost button once for the maximum power setting, press the boost button again for the minimum power setting.

STEP 3: To turn off the vacuum cleaner, press the power trigger.

WARNING: Do not use the vacuum cleaner without the washable filter and filter cone in position. The dust container must be closed before use. Clean the washable filter regularly to preserve the suction of the vacuum cleaner.

Using the Extension Tube and Floor Brush

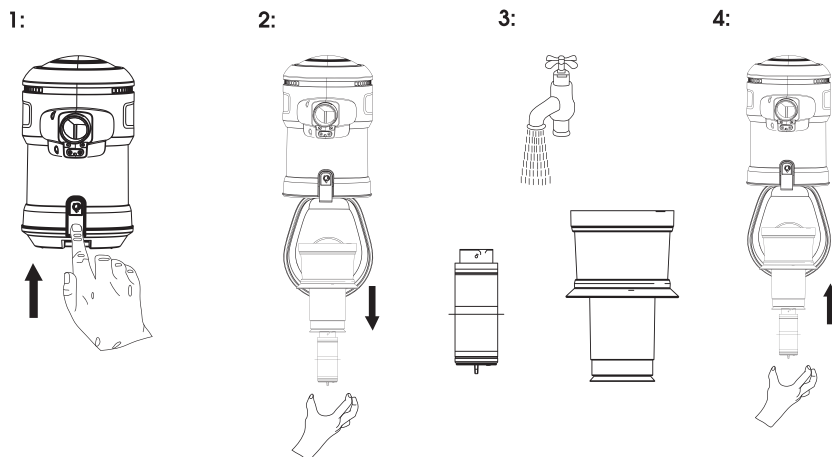
The extension tube can be fitted onto the air inlet to extend reach, ideal for floor-to-ceiling cleaning.

STEP 1: Fit the extension tube onto the air inlet by aligning the pins and carefully pushing the extension tube towards the vacuum cleaner main unit until it clicks into position. To release the extension tube, press the extension tube release button and pull it away from the vacuum cleaner main unit.

STEP 2: Attach the floor brush by aligning the pins on the floor brush with the bottom of the extension tube. Carefully push together to secure into place. To release the floor brush, press the floor brush release button and pull it away from the extension tube.

NOTE: The floor brush comes fitted with the soft bristle brush bar, which is ideal for use on hard floors and thin pile carpets. For vacuuming thick pile carpets, it is recommended to use the firm bristle brush bar. For instructions on how to change the brush bar, please read the section entitled 'Cleaning the Floor Brush'.

The floor brush can also be attached directly onto the vacuum cleaner main unit by aligning the pins on the floor brush with the air inlet on the vacuum cleaner main unit. Carefully push together to secure the floor brush in place.



Using the 2 in 1 Crevice and Brush Tool

STEP 1: If required, fit the extension tube onto the air inlet following the instructions in the section entitled 'Using the Extension Tube and Floor Brush'.

STEP 2: Push the 2 in 1 crevice and brush tool onto the end of the extension tube. If no extension is required, push the 2 in 1 crevice and brush tool directly onto the air inlet until secure.

STEP 3: Slide the brush bar back to use as a crevice tool, ideal for removing dust and dirt from corners and recesses.

Slide the brush bar forward to use as a brush tool, perfect for cleaning upholstery and fabrics.

STEP 4: To remove the 2 in 1 crevice and brush tool, pull it firmly away from the end of the extension tube or the air inlet.

Emptying the Dust Container

Before emptying the dust container, check that the vacuum cleaner is switched off and any attachments have been removed from the air inlet.

It is recommended to empty the dust container outdoors.

STEP 1: Whilst securely holding the vacuum cleaner main unit, press the dust container base release latch. Empty the dust container slowly and carefully to reduce the amount of dust released back into the atmosphere.

STEP 2: Close the dust container by pushing the base closed until the dust container base release latch locks back into position.

NOTE: Always close the dust container base before using the vacuum cleaner.

Cleaning the Washable Filter

The washable filter can only be accessed when the dust container is open.

STEP 1: Open and empty the dust container following the instructions in the section entitled 'Emptying the Dust Container'.

STEP 2: Once the dust container is empty, remove the filter cone by rotating it in an anticlockwise direction and lifting it out of the dust container.

STEP 3: Rotate the washable filter in an anticlockwise direction and lift out. Shake the washable filter and filter cone until the majority of the dust has been removed, then rinse under clean, warm water and allow to dry naturally.

STEP 4: Once the washable filter is fully dry, place it back into the dust container and twist in a clockwise direction to lock into position. Replace the filter cone and secure into place by rotating in a clockwise direction.

STEP 5: Close the dust container by pushing it firmly shut until it clicks into position.

NOTE: Do not clean the washable filter or filter cone using detergents or use external heat sources such as radiators to dry them.

The dust container should be emptied frequently and the washable filter cleaned regularly to preserve suction and prolong the life of the vacuum cleaner.

WARNING - AUTO CUT OFF:

If the dust container, filters and roller bar are not regularly cleaned, the vacuum cleaner main unit or the floor brush will cut out and stop working. If the vacuum cleaner cuts out, turn it off and clean the filters and roller bar. Make sure the battery pack is removed and securely refitted before restarting the vacuum cleaner.

WARNING: Do not reassemble or use the vacuum cleaner until the washable filter and filter cone are fully dry, as this could cause damage.

Cleaning the Floor Brush

The floor brush comes fitted with the soft bristle brush bar, which is removable for easy cleaning and can be replaced with the firm bristle brush bar if required.

STEP 1: Switch off the vacuum cleaner and remove the floor brush by pressing the floor brush release button and pulling it away from the extension tube.

STEP 2: Slide the brush bar release tab to release the brush bar and lift it out of the floor brush.

STEP 3: Remove any built-up dust, debris and hair from the brush bar and floor brush.

STEP 4: Return the brush bar into the floor brush by aligning the tabs and sliding the brush bar release tab to the side, allowing the brush bar to fit into place.

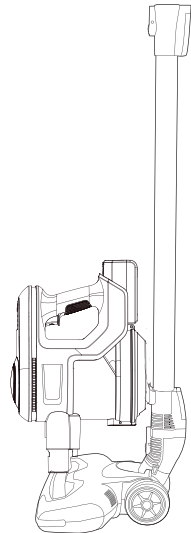
Removing the Rechargeable Battery Pack

The battery pack can be removed from the vacuum cleaner main unit by pressing the battery release catch and sliding the battery pack out of the vacuum cleaner main unit. To refit the battery pack, realign it with the vacuum cleaner main unit and press the battery release catch down whilst sliding the battery pack into place until it clicks.

Storage

Check that the vacuum cleaner is cool, clean and dry before storing in a cool, dry place.

The vacuum cleaner can be neatly stored away after use by securing the vacuum cleaner main unit onto the extension tube using the storage hook.



Troubleshooting

Symptom	Possible Cause	Solution
The vacuum cleaner will not charge.	<p>The mains power adapter is not securely connected.</p> <p>The battery is not secured properly.</p>	<p>Connect the mains power adaptor to the charging port on the battery pack, following the instructions in the section entitled 'Charging the Digital Multi Vac'.</p> <p>Check that the battery pack is secured onto the vacuum cleaner main unit.</p>
The suction is poor.	<p>The air inlet is blocked.</p> <p>The dust container is almost full.</p> <p>The washable filter is blocked.</p>	<p>Disconnect the attachment and clear the blockage.</p> <p>Empty the dust container following the instructions in the section entitled 'Emptying the Dust Container'.</p> <p>Clean the washable filter following the instructions in the section entitled 'Cleaning the Washable Filter'.</p>
The brush bar is not rotating.	The brush bar is blocked due to built-up hair, dust and debris.	Clean the floor brush following the instructions in the section entitled 'Cleaning the Floor Brush'.

Specifications

Product code: SAL0950

Battery: 29.6 V DC 2500 mAh Li-ion

Adaptor Input: 100–240 V ~ 50/60 Hz

Adaptor Output: 36 V 0.5 A 18.0 W

Average active efficiency: 85.91 %

Efficiency at low load (10 %): 75.26 %

No-load power consumption: < 0.1 W

Dust tank capacity: 1.2 L

Notes:

**UP Global Sourcing UK Ltd.,
Victoria Street, Manchester OL9 0DD. UK.
Edmund-Rumpler Straße 5, 51149 Köln. Germany.**

If this product does not reach you in an acceptable condition please contact our Customer Services Department at **www.salter.com**

Please have your delivery note to hand as details from it will be required.

If you wish to return this product, please return it to the retailer from where it was purchased with your receipt (subject to their terms and conditions).

Guarantee

All products purchased as new carry a manufacturer's guarantee; the time period of the guarantee will vary dependent upon the product. Where reasonable proof of purchase can be provided, Salter will provide a standard 12 month guarantee with the retailer from the date of purchase. This is only applicable when products have been used as instructed for their intended, domestic use. Any misuse or dismantling of products will invalidate any guarantee.

Under the guarantee, we undertake to repair or replace free of any charge any parts found to be defective. In the event that we cannot provide an exact replacement, a similar product will be offered or the cost refunded. Any damages from daily wear and tear are not covered by this guarantee, nor are consumables such as plugs, fuses etc.

Please note that the above terms and conditions may be updated from time to time and we therefore recommend that you check these each time you revisit the website.

Nothing in this guarantee or in the instructions relating to this product excludes, restricts or otherwise affects your statutory rights.

Disposal of Waste Batteries and Electrical and Electronic Equipment



This symbol on the product, its batteries or its packaging means that this product and any batteries it contains must not be disposed of with household waste. Instead, it is the user's responsibility to hand this over to an applicable collection point for the recycling of batteries and electrical and electronic equipment. This separate collection and recycling will help to conserve natural resources and prevent potential negative consequences for human health and the environment due to the possible presence of hazardous substances in batteries and electrical and electronic equipment, which could be caused by inappropriate disposal. Some retailers provide take-back services which allow the user to return exhausted equipment for appropriate disposal. **It is the user's responsibility to delete any data on electrical and electronic equipment prior to disposal.** For more information about where to drop batteries, electrical and electronic waste off, please contact the local city/municipality office, household waste disposal service, or the retailer.

*To be eligible for the extended guarantee, go to **guarantee.upgs.com/salter** and register your product within 30 days of purchase.



Find us on 

www.facebook.com/SalterUK



SALTER®

Manufactured by:

UP Global Sourcing UK Ltd.,

Victoria Street, Manchester OL9 0DD. **UK.**

Edmund-Rumpler Straße 5, 51149 Köln. **Germany.**

Made in China.

©Salter trademark. All rights reserved.

