

SALTER®
SINCE 1760
PROFESSIONAL



Chilled Draught
Beer Dispenser

We set the bar high.

Please retain instructions for future reference.

NOTE: UTILISING THIS APPLIANCE FOR ALCOHOL CONSUMPTION IS STRICTLY FOR THOSE OF THE LEGAL DRINKING AGE. IT IS RECOMMENDED ADULTS DO NOT CONSUME MORE THAN 14 UNITS PER WEEK. IT IS NOT RECOMMENDED TO CONSUME ALCOHOL WHILST PREGNANT.

Safety Instructions

When using electrical appliances, basic safety precautions should always be followed.

Check that the voltage indicated on the rating plate corresponds with that of the local network before connecting the appliance to the mains power supply.

Children aged from 8 years and people with reduced physical, sensory or mental capabilities or lack of experience and knowledge can use this appliance, only if they have been given supervision or instruction concerning use of the appliance in a safe way and understand the hazards involved.

Children should be supervised to ensure that they do not play with the appliance.

Unless they are older than 8 and supervised, children should not perform cleaning or user maintenance.

This appliance is not a toy.

If the power supply cord, plug or any part of the appliance is malfunctioning or if it has been dropped or damaged, cease using the product immediately to avoid potential injury.

This appliance contains no user serviceable parts, only a qualified electrician should carry out repairs.

Improper repairs may place the user at risk of harm.

Keep the appliance and its power supply cord out of the reach of children.

Keep the appliance out of the reach of children when it is switched on.

Keep the appliance and its power supply cord away from heat or sharp edges that could cause damage.

Keep the power supply cord away from any parts of the appliance that may become hot during use.

Keep the appliance away from other heat emitting appliances.

Do not immerse the appliance in water or any other liquid.

Do not operate the appliance with wet hands.

Do not leave the appliance unattended whilst connected to the mains power supply.

Do not remove the appliance from the mains power supply by pulling the cord; switch it off and remove the plug by hand.

Do not pull or carry the appliance by its power supply cord.

Do not use the appliance for anything other than its intended use.

Do not use any accessories other than those supplied.

Do not use this appliance outdoors.

Do not store the appliance in direct sunlight or in high humidity conditions.

Do not cover the appliance while it is being operated.

Do not move the appliance whilst it is in use.

Do not remove the beer keg from the appliance until it is completely empty.

Do not remove the CO₂ cartridge until all of the CO₂ gas has been used.

Do not use the CO₂ cartridge if the room temperature exceeds 49 °C / 120 °F.

Do not store explosive substances such as aerosol cans with flammable propellant in this appliance.

Switch off the appliance and disconnect it from the mains power supply before changing or fitting accessories and kegs.

Always unplug the appliance after use and before any cleaning or user maintenance.

Always use the appliance on a stable surface, at a height that is comfortable for the user.

Always allow at least 10 cm clear on each side of the appliance to ensure proper ventilation.

Use of an extension cord with the appliance is not recommended. This appliance should not be operated by means of an external timer or separate remote control system, other than that supplied with this appliance.

This appliance is intended for domestic use only. It should not be used for commercial purposes.

Care and Maintenance

Before attempting any cleaning or maintenance, unplug the beer dispenser from the mains power supply.

STEP 1: Wipe the dispenser housing with a soft, damp cloth and dry thoroughly.

Do not immerse the beer dispenser in water or any other liquid. Never use harsh or abrasive cleaning detergents or scourers to clean the beer dispenser or its accessories, as this could damage the surface.

NOTE: The beer dispenser should be cleaned after each use.

Cleaning the Beer Tap Mechanism

Before using the beer dispenser for the first time, clean the beer tap. The beer tap should be cleaned after every use.

STEP 1: Press the top cover release button and lift open the top cover of the beer dispenser.

STEP 2: To remove the beer dispensing unit, press the white release buttons and disconnect the air inlet and beer outlets, then lift out the beer dispensing unit from the main unit.



STEP 3: Position the drip tray beneath the main unit and secure into place.

STEP 4: Fill a large container with warm water and submerge the cleaning bottle; squeeze then release to fill with water.

STEP 5: Place the clear plastic tube over the end of the cleaning bottle and attach the other end to the beer tap tube.



STEP 6: Pull the beer tap handle down completely and squeeze the cleaning bottle to push the water through the beer tap. Repeat 3 times or until clean.

STEP 7: The air inlet, beer outlet and keg piercing tube can be cleaned by placing the cleaning tube onto the end of the air inlet and squeezing the cleaning bottle.

Selecting a Keg

Only 5 litre universal kegs and 5 litre pre-carbonated kegs can be used in this appliance.

Always follow the keg manufacturer's safety instructions.

Check that the keg is undamaged and in date before use.

Chill the keg for a minimum of 10 hours in the fridge before use.

Never shake the keg before use.

Never put the keg in direct sunlight.

Description of Parts





Scan for **non-carbonated** instructional video.



Scan for **carbonated** instructional video.

Using the Chilled Draught Beer Dispenser

Fitting a Universal 5 Litre Keg

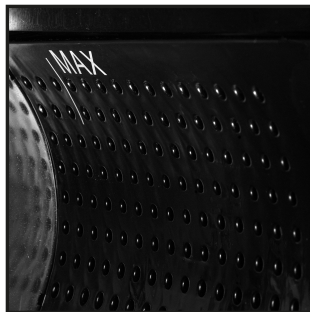
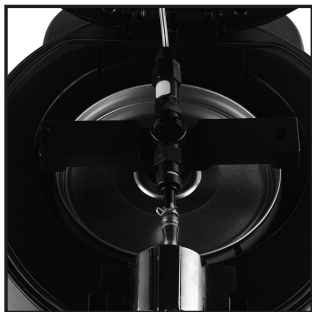
Before fitting or piercing the keg, follow the safety instructions on the keg to expel any excess gas. Check that the keg has vented for long enough to avoid excess foam.

STEP 1: Plug in and switch on the beer dispenser at the mains power supply; the built-in cooling system will activate.

STEP 2: Remove any cover (if present) from the seal on the keg.

STEP 3: Press the top cover release button and lift open the top cover of the beer dispenser.

To remove the beer dispensing unit, press the white release buttons and disconnect the air and beer outlets, then lift out the beer dispensing unit from the main unit.



STEP 4: Fill the beer dispensing unit with cold water up to the max fill line.

NOTE: At an ambient temperature of 22–24 °C the built-in cooling system will work for approx. 19–21 hours and will chill the keg to between 3–6 °C.

STEP 5: Follow the safety instructions on the keg to expel any excess gas.

STEP 6: Once the keg has been vented sufficiently, use the piercing tube to pierce and push the seal of the keg. Push down the piercing tube until the mount clips onto the sides of the keg.



STEP 7: Once the mount is securely attached to the keg, carefully lift the keg and place it into the beer dispenser main unit.



STEP 8: Attach the beer tap tube to the beer outlet and the CO₂ connector to the air inlet.

WARNING: TURN THE CO₂ PRESSURE RELIEF VALVE IN A CLOCKWISE DIRECTION TO ‘-’ POSITION SO THAT CO₂ GAS CANNOT ESCAPE.

STEP 9: Pull down the CO₂ cartridge sheath and turn in an anticlockwise direction to remove it.

STEP 10: Insert a CO₂ cartridge into the sheath with the cartridge nozzle facing upwards.

STEP 11: Replace the CO₂ cartridge sheath and turn in a clockwise direction until it clicks, indicating that the cartridge has been pierced and CO₂ gas can flow freely inside the beer dispenser.

STEP 12: Push the CO₂ cartridge sheath back onto the top cover, until it clicks back into place, then close it.



NOTE: TO HELP WITH THE COOLING PROCESS, PUSH THE DRAIN SWITCH UP COMPLETELY, THEN FILL THE WATER TANK

WITH WATER UP TO THE MAX. FILL MARK.

WARNING: ALWAYS TURN THE CO₂ PRESSURE RELIEF VALVE IN A CLOCKWISE DIRECTION TO ‘-’ POSITION WHEN COOLING BEER, WHEN BEER FLOW IS PAUSED, OR WHEN CHANGING THE CO₂ CARTRIDGE.

STEP 10: To release beer from the keg, turn the CO₂ pressure release valve in an anticlockwise direction towards the ‘+’ position.

STEP 11: To pour the beer, pull the beer tap handle down completely.

NOTE: THE CO₂ PRESSURE RELEASE VALVE CAN BE ADJUSTED TO INCREASE OR DECREASE THE AMOUNT OF CO₂ USED WHEN POURING.

WARNING: WHEN THE KEG IS ALMOST EMPTY, THE FINAL AMOUNT OF BEER WILL BE RELEASED AS A JET.

Replacing a Universal 5 Litre Keg

STEP 1: Press the top cover release button and lift open the top cover of the beer dispenser.

To remove the beer dispensing unit, press the white release buttons and disconnect the air and beer outlets, then lift out the beer dispensing unit from the main unit.

STEP 2: To remove the keg from the beer dispensing unit, release the right-hand side of the keg mount and push the keg to the left. Pull the keg piercing tube out from the keg.

STEP 3: To fit a new keg, follow steps 1–11 in the section entitled 'Fitting a Universal 5 Litre Keg'.

Replacing the CO₂ Cartridge

CAUTION: Ensure that the CO₂ cannister is empty before removing it from the unit.

STEP 1: When the CO₂ cartridge runs out of gas, turn the CO₂ pressure release valve in a clockwise direction to position '-' so that CO₂ gas cannot escape.

STEP 2: Press the top cover release button and open the lid of the beer dispenser.

STEP 3: Remove the gas tube from the beer mount by pressing the top cover release button.

STEP 4: Open the gas valve fully to dispel any air left in the cannister. Once the gas cannister is completely empty, replace the gas valve on the beer mount.

STEP 5: Pull down the CO₂ cartridge sheath and turn in an anticlockwise direction to remove it. Remove the empty CO₂ cartridge and dispose of it carefully.



STEP 6: Insert a CO₂ cartridge into the sheath with the cartridge nozzle facing upwards.

STEP 7: Replace the CO₂ cartridge sheath and turn in a clockwise direction until it clicks, indicating that the cartridge has been pierced and CO₂ gas can flow freely inside the beer dispenser.

STEP 8: Push the CO₂ cartridge sheath back inside the top cover, until it clicks back into place, then close it.

NOTE: THE BEER DISPENSER IS COMPATIBLE WITH 16 G NON-THREADED CO₂ CARTRIDGES ONLY. DO NOT USE ANY OTHER TYPE OF CARTRIDGE.

Fitting a Pre-carbonated 5 Litre Keg

Pre-carbonated kegs do not require use of a CO₂ cartridge.

Pre-carbonated kegs come with a pre-attached tap which must be removed before use.



Before fitting the keg or piercing the keg plug, follow the safety instructions on the keg. Check that the keg has rested for long enough to avoid excess foam.

STEP 1: Plug in and switch on the beer dispenser at the mains power supply; the built-in cooling system will activate.

STEP 2: Remove the pre-attached tap from the top of the keg.

STEP 3: Press the top cover release button and lift open the top cover of the beer dispenser.

To remove the beer dispensing unit, press the white release buttons and disconnect the air and beer outlets, then lift out the beer dispensing unit from the main unit.

WARNING: CHECK THAT THE CO₂ PRESSURE RELEASE VALVE IS OPEN AT '+' POSITION AND THAT THE CO₂ CARTRIDGE SHEATH IS EMPTY.

STEP 4: Fill the unit with cold water to the max fill line.

NOTE: AT AN AMBIENT TEMPERATURE OF 22-24 °C, THE BUILT-IN COOLING SYSTEM WILL WORK FOR APPROX. 19-21 HOURS AND WILL CHILL THE KEG TO BETWEEN 3-6 °C.



STEP 5: Position the keg adaptor onto the top of the keg and carefully push into place.

STEP 6: Press the tap cover release button located under the beer tap tube and lift.

STEP 7: Insert the keg into the beer dispenser and

correctly position the keg so that the adaptor lines up with the beer tap tube.

STEP 8: Insert the beer tap tube into the keg adaptor. Lift the keg whilst inserting the beer tap tube, as this will make it easier to insert. Then push the tap cover back into place.



STEP 9: To pour the beer, pull the beer tap handle down completely.



NOTE: TO REMOVE THE KEG ADAPTOR, SQUEEZE THE KEG ADAPTOR ON BOTH SIDES AND LIFT AWAY TO RELEASE FROM THE KEG.

Releasing Water from the Pro Draught Beer Dispenser

It is advised to change the water once a week.

STEP 1: With the drip tray in position, push the drain switch down completely to release the water into the drip tray.

STEP 2: When all the water has been released or the drip tray is full, push the drain switch up completely, remove the drip tray from the main unit and dispose of the water. Repeat these steps, if necessary, until fully drained.

Replacing the Joint Sealing Ring

Improper use or wear and tear can affect the performance of the joint sealing ring in the CO₂ connector. To replace it:

STEP 1: Using a small flat head screwdriver (not included), carefully lift out the joint sealing ring from the CO₂ connector, taking care not to cause damage.

STEP 2: Insert the replacement joint sealing ring into the CO₂ connector and press it down carefully using an empty CO₂ cartridge.

WARNING: DO NOT USE A FULL CO₂ CARTRIDGE TO FIT THE REPLACEMENT JOINT SEALING RING. SWITCH OFF AND UNPLUG THE BEER DISPENSER FROM THE MAINS POWER SUPPLY BEFORE REPLACING THE JOINT SEALING RING. DO NOT REPLACE THE JOINT SEALING RING WHILE THERE IS A KEG INSIDE THE BEER DISPENSER.

Replacing the Beer Tap Tube

If the beer tap tube breaks or leaks, it must be replaced.

STEP 1: Press the tap cover release button (located at the rear of the beer tap mechanism) and pull up the detachable tap cover.

STEP 2: Pull the beer tap handle down completely and carefully pull out the beer tap tube.

STEP 3: Release the throat clip and detach the beer outlet connector.

STEP 4: Fit the replacement beer tap tube onto the beer outlet and secure the throat clip. Pull the beer tap handle down completely and refit the beer tap tube in place.

STEP 5: Close the detachable tap cover by pushing down until it clicks.

WARNING: SWITCH OFF AND UNPLUG THE BEER DISPENSER FROM THE MAINS POWER SUPPLY BEFORE REPLACING THE BEER TAP TUBE. DO NOT REPLACE THE BEER TAP TUBE WHILE THERE IS A KEG INSIDE THE BEER DISPENSER.

Replacing the Piercing Tube Sealing Ring

NOTE: MAKE SURE THAT THE KEG PIERCING TUBE IS SECURE BEFORE REPLACEMENT, SO THAT THE PIERCING TUBE SEALING RING IS NOT DAMAGED.
IF THE BEER DISPENSING UNIT IS LEAKING, THE PIERCING TUBE SEALING RING NEEDS TO BE REPLACED.

STEP 1: Press the top cover release button and open the lid of the beer dispenser. To remove the beer dispensing unit, press the chrome release buttons and disconnect the air inlet and beer outlet, then lift the beer dispensing unit out from the main unit.

STEP 2: Turn the keg piercing tube in an anticlockwise direction to remove it from the beer dispensing unit.

STEP 3: Remove the piercing tube sealing ring from the top of the keg piercing tube and insert the replacement.

STEP 4: Reattached the keg piercing tube to the beer dispensing unit by turning in a clockwise direction until secure.

WARNING: SWITCH OFF AND UNPLUG THE BEER DISPENSER FROM THE MAINS POWER SUPPLY BEFORE REPLACING THE PIERCING TUBE SEALING RING. DO NOT REPLACE THE PIERCING TUBE SEALING RING WHILE THERE IS A KEG INSIDE THE BEER DISPENSER.

Troubleshooting

Problem	Cause	Solution
The beer tap does not work.	The beer tap tube is not properly connected or is damaged.	Check that the beer tap tube is properly connected. Follow the steps in the sections entitled 'Fitting a Universal 5 Litre Keg', 'Fitting a Pre-carbonated 5 Litre Keg' or 'Changing the Beer Tap Tube'.
Beer is not pouring out.	The CO ₂ cartridge is empty. The keg is empty.	Replace the CO ₂ cartridge following the steps in the section entitled 'Replacing the CO ₂ Cartridge'. Replace the keg following the steps in the sections entitled 'Fitting a Universal 5 Litre Keg' or 'Fitting a Pre-carbonated 5 Litre Keg'.
The beer is too carbonated or foamy.	The keg is too warm. The keg has been shaken before use. There is keg is almost empty.	Cool the keg following the keg manufacturer's instructions. Put the keg to one side and allow to rest. Replace the keg following the steps in the sections entitled 'Fitting a Universal 5 Litre Keg' or 'Fitting a Pre-carbonated 5 Litre Keg'.
Beer is pouring out too slowly.	The CO ₂ cartridge is almost empty. The beer tap tube is not properly connected or is damaged.	Replace the CO ₂ cartridge following the steps in the section entitled 'Replacing the CO ₂ Cartridge'. Check that the beer tap tube is properly connected. Follow the steps in the sections entitled 'Fitting a Universal 5 Litre Keg', 'Fitting a Pre-carbonated 5 Litre Keg' or 'Changing the Beer Tap Tube'.

Specifications

Product code: EK4919

Climate type: SN/N

VESICANT: CYCLOPENTANE C₅H₁₀

Output: 220-240 V ~ 50 Hz, 65 W

Disposal of Waste Batteries and Electrical and Electronic Equipment



This symbol on the product, its batteries or its packaging means that this product and any batteries it contains must not be disposed of with household waste. Instead, it is the user's responsibility to hand this over to an applicable collection point for the recycling of batteries and electrical and electronic equipment. This separate collection and recycling will help to conserve natural resources and prevent potential negative consequences for human health and the environment due to the possible presence of hazardous substances in batteries and electrical and electronic equipment, which could be caused by inappropriate disposal. Some retailers provide take-back services which allow the user to return exhausted equipment for appropriate disposal. **It is the user's responsibility to delete any data on electrical and electronic equipment prior to disposal.** For more information about where to drop batteries, electrical and electronic waste off, please contact the local city/municipality office, household waste disposal service, or the retailer.

Find us on 

www.facebook.com/SalterUK

SALTER[®]
SINCE 1760
PROFESSIONAL

Manufactured by:

Ultimate Products UK Ltd,
Victoria Street, Manchester OL9 0DD. **UK.**
Ultimate Products Europe Ltd.,
19 Baggot Street Lower, Dublin D02 X658. **ROI.**

Made in China.

©Salter trademark. All rights reserved.

