

**SALTER®**  
SINCE 1760

## 4 in 1 Kitchen Master

The all-in-one solution for  
food preparation



Please retain instructions for future reference.

## Safety Instructions

When using electrical appliances, basic safety precautions should always be followed.

Check that the voltage indicated on the rating plate corresponds with that of the local network before connecting the appliance to the mains power supply.

Children aged from 8 years and people with reduced physical, sensory or mental capabilities or lack of experience and knowledge can use this appliance, only if they have been given supervision or instruction concerning use of the appliance in a safe way and understand the hazards involved.

Children should be supervised to ensure that they do not play with the appliance.

Unless they are older than 8 and supervised, children should not perform cleaning or user maintenance.

This appliance is not a toy.

This appliance contains no user serviceable parts. If the power supply cord, plug or any part of the appliance is malfunctioning, or if the appliance has been dropped or damaged, only a qualified electrician should carry out repairs. Improper repairs may place the user at risk of harm.

Keep the appliance and its power supply cord out of the reach of children.

Keep the appliance and its power supply cord away from heat or sharp edges that could cause damage.

Keep the appliance away from heat emitting appliances.

Keep hands, fingers, hair and any loose clothing away from the rotating tools of the appliance.

Do not touch any moving parts on this appliance during use, as this could cause injury.

Do not immerse the appliance in water or any other liquid.

Do not operate the appliance with wet hands.

Do not use broken or loose cutting or rotating blades.  
Do not overload the appliance as the mixture level may rise during blending.  
Do not leave the appliance unattended whilst connected to the mains power supply.  
Do not remove the appliance from the mains power supply by pulling the cord; switch it off and remove the plug by hand.  
Do not use the appliance for anything other than its intended use.  
Do not use any accessories other than those supplied.  
Do not use this appliance outdoors.  
Do not store the appliance in direct sunlight or in high humidity conditions.  
Do not move the appliance whilst it is in use.  
Do not place boiling water or very hot liquid in the appliance.  
Always unplug the appliance after use and before any cleaning or user maintenance.  
Always use the appliance on a stable, heat-resistant surface, at a height that is comfortable for the user.  
Use of an extension cord with the appliance is not recommended.  
This appliance should not be operated by means of an external timer or separate remote control system, other than that supplied with this appliance.  
This appliance is intended for domestic use only. It should not be used for commercial purposes.  
**WARNING:** Do not touch sharp blades.

## Care and Maintenance

Before attempting any cleaning or maintenance, switch off and unplug the Kitchen Master from the mains power supply and allow it to cool fully.

**STEP 1:** Wipe the Kitchen Master main unit with a soft, damp cloth and allow to dry thoroughly.

**STEP 2:** Wash all of the accessories in warm, soapy water, then rinse and dry thoroughly.

Never touch the blades; using extreme caution, clean the blades with a brush and dry carefully.

Do not immerse the Kitchen Master main unit in water or any other liquid.

Do not use harsh or abrasive detergents or scourers to clean the Kitchen Master, as this could cause damage.

**NOTE:** The Kitchen Master should be cleaned after each use.

**WARNING:** Handle the attachments with care, as the blades are sharp. Exercise caution when attaching, removing, cleaning or storing attachments.

## Description of Parts



- |                                    |                               |
|------------------------------------|-------------------------------|
| 1. 4 in 1 Kitchen Master main unit | 9. Shredding and slicing disc |
| 2. Speed control dial              | 10. Sports bottle             |
| 3. Universal container             | 11. Sports bottle lid         |
| 4. Chopping bowl lid               | 12. Blending blade            |
| 5. Chopping blade                  | 13. Grinding cup              |
| 6. Food processor lid              | 14. Grinding blade            |
| 7. Food processor spout            | 15. Food pusher               |
| 8. Shredding and slicing adaptor   |                               |

## Instructions for Use

### Before First Use

Wash all of the attachments in warm, soapy water, then rinse and dry thoroughly. Wipe the Kitchen Master main unit with a soft, damp cloth and allow to dry thoroughly.

**NOTE:** When using the Kitchen Master for the first time, a slight odour may be emitted. This is normal and will soon subside. Allow for sufficient ventilation around the Kitchen Master.

## Assembling the 4 in 1 Kitchen Master

All attachments must be securely fitted before use; do not attempt to remove attachments until the blades have stopped moving.

**STEP 1:** Check that the Kitchen Master main unit is switched off and unplugged from the mains power supply.

**STEP 2:** Position the Kitchen Master main unit onto a flat, stable surface, at a height that is comfortable for the user. Check that the rubber feet are firmly planted so that the Kitchen Master does not wobble during use.

**STEP 3:** Make sure the speed control dial is set to position '0'.

**STEP 4:** Select the attachments as desired.

## Assembling as a Chopper

**STEP 1:** Place the universal container onto the Kitchen Master main unit. Align the locking tabs and gently press downwards while twisting in a clockwise direction to lock into place.

**STEP 2:** Carefully place the chopping blade inside the universal container and align the tabs.

**STEP 3:** Place the ingredients into the chopping bowl.

**STEP 4:** Place the chopping bowl lid onto the universal container and twist in a clockwise direction until secure.

## Assembling as a Food Processor

**STEP 1:** Place the universal container onto the Kitchen Master main unit. Align the locking tabs and gently press downwards while twisting in a clockwise direction to lock into place.

**STEP 2:** Place the shredding and slicing adaptor inside the universal container and align the tabs.

**STEP 3:** Carefully place the shredding and slicing disc on top of the shredding and slicing adaptor and align the tabs.

**STEP 4:** Place the food processor lid onto the universal container and twist in a clockwise direction to lock into place.

## Assembling as a Sports Bottle Blender

**STEP 1:** Place the ingredients into the sports bottle.

**STEP 2:** Carefully place the blending blade on top of the sports bottle and rotate in a clockwise direction until locked into place.

**STEP 3:** Invert the sports bottle and place it on top of the Kitchen Master main unit. Align the locking tabs and gently press downwards while twisting in a clockwise direction to lock into place.

## Assembling the Grinding Cup

**STEP 1:** Place the ingredients into the grinding cup.

**STEP 2:** Carefully place the grinding blade on top of the grinding cup and rotate in a clockwise direction until locked into place.

**STEP 3:** Place the grinding cup onto the Kitchen Master main unit. Align the locking tabs and gently press downwards while twisting in a clockwise direction to lock into place.

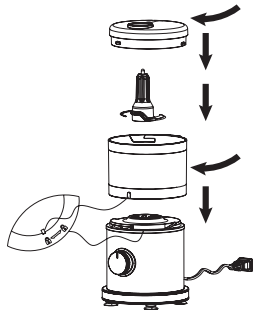
## Using as a Chopper

**STEP 1:** Holding the Kitchen Master main unit steady, rotate the speed control dial to the required setting to begin chopping.

**STEP 2:** Once chopping is complete, turn the speed control dial back to position '0' and wait until the blades stop rotating.

**STEP 3:** Remove the chopping bowl by twisting it in an anticlockwise direction and lifting it up and away from the Kitchen Master main unit.

**STEP 4:** Remove the chopping blade by lifting it up and away from the Kitchen Master main unit.



## Using as a Food Processor

**STEP 1:** Add the ingredients via the opening on the food processor lid; the food pusher can be used to push food downwards if necessary.

**STEP 2:** Place a suitable vessel beneath the food processor spout to catch the food.

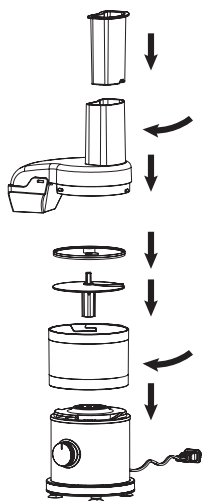
**STEP 3:** Plug in and switch on the Kitchen Master main unit at the mains power supply.

**STEP 4:** Holding the Kitchen Master main unit steady, rotate the speed control dial to the required setting to begin shredding and slicing.

**STEP 5:** Use the food pusher to add extra ingredients into the opening on the food processor lid during shredding and slicing, if required.

**STEP 6:** Once shredding and slicing is complete, turn the speed control dial back to position '0' and wait until the blades stop rotating.

**STEP 7:** Remove the food processor lid by twisting it in an anticlockwise direction and lifting it up and away from the Kitchen Master main unit.



**NOTE:** It is recommended to use speed setting 1 for soft foods and speed setting 2 for hard foods. Remove hard kernels from food before shredding and slicing. Cutting food into smaller pieces may improve results.



**WARNING:** Max. continuous operation time for shredding and slicing is 30 seconds. Leave to cool for at least 1 minute before shredding and slicing again.

### Using as a Sports Bottle Blender

**STEP 1:** Holding the Kitchen Master main unit steady, rotate the speed control dial to the required setting to begin blending.

**STEP 2:** Once blending is complete, turn the speed control dial back to position '0' and wait until the blades stop rotating.

**STEP 3:** Remove the sports bottle by twisting it in an anticlockwise direction and lifting it up and away from the Kitchen Master main unit.

**STEP 4:** Carefully remove the blending blade by twisting it in an anticlockwise direction and lifting it up and away from the Kitchen Master main unit.

**STEP 5:** Place the sports bottle lid onto the sports bottle and twist in a clockwise direction to lock into place. The sports bottle lid can be used for drinking.

**NOTE:** Use a small amount of liquid to help blend ingredients. Do not exceed the max. fill mark. Do not operate the blender whilst empty, as this can cause damage. Do not blend warm or hot liquid or food.

## Using as a Grinder

**STEP 1:** Holding the Kitchen Master main unit steady, rotate the speed control dial to the required setting to begin grinding.

**STEP 2:** Once grinding is complete, turn the speed control dial back to position '0' and wait until the blades stop rotating.

**STEP 3:** Remove the grinding cup by twisting it in an anticlockwise direction and lifting it up and away from the Kitchen Master main unit.

**STEP 4:** Remove the grinding blade by twisting it in an anticlockwise direction and lifting it up and away from the Kitchen Master main unit.

**NOTE:** Use a small amount of liquid to help grind ingredients. Do not exceed the max. fill mark.

**WARNING:** Max. continuous operation time for grinding is 30 seconds. Leave to cool down for at least 10 minutes before grinding again.

Do not operate the grinder whilst empty, as this can cause damage.

Do not grind warm or hot liquid or food.

## Using the Speed Settings

Holding the Kitchen Master main unit steady, rotate the speed control dial in a clockwise direction to select a speed setting or in an anticlockwise direction to activate the pulse setting (P). The pulse setting provides quick bursts of speed. Hold the speed control dial in place to activate the motor and release to stop it. Turn the speed control dial back to position '0' and wait for the blades to stop rotating before removing attachments.

## Storage

Check that the Kitchen Master main unit and its accessories are cool, clean and dry before storing in a cool, dry place.

Never wrap the cord tightly around the Kitchen Master; wrap it loosely to avoid causing damage.

## Troubleshooting

Problem	Possible Cause	Solution
The Kitchen Master will not operate.	The Kitchen Master is not connected to the mains power supply.  The Kitchen Master is not correctly assembled.	Plug in and switch on the Kitchen Master at the mains power supply.  Check that the Kitchen Master has been correctly assembled and that the attachments are secure.
There are large chunks of ingredients after processing.	The Kitchen Master has been overfilled.	Remove some of the ingredients and process in batches.
The sports bottle is leaking.	The sports bottle lid is not fitted correctly.	Checking that the threads are correctly aligned, twist the sports bottle lid in a clockwise direction until secure.

## Specifications

Product code: EK5028

Input: 220–240 V ~ 50–60 Hz

Output: 400 W

## Connection To The Mains

Please check that the voltage indicated on the product corresponds with your supply voltage.

### Important

As the colours in the mains lead of this appliance may not correspond with the coloured markings identifying the terminals in your plug, please proceed as follows:

The wires in the mains lead are coloured in accordance with the following code:

#### Blue Neutral (N)

#### Brown Live (L)

**FOR UK USE ONLY** - Plug fitting details  
(where applicable).

The wire coloured **BLUE** is the **NEUTRAL** and must be connected to the terminal marked **N** or coloured **BLACK**.

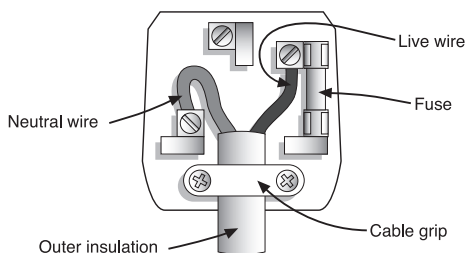
The wire coloured **BROWN** is the **LIVE** wire and must be connected to the terminal marked **L** or coloured **RED**.

On no account must either the **BROWN** or the **BLUE** wire be connected to the **EARTH** terminal ( $\perp$ ).

Always ensure that the cord grip is fastened correctly.

The plug must be fitted with a fuse of the same rating already fitted and conforming to BS 1362 and be ASTA approved.

If in doubt, consult a qualified electrician who will be pleased to do this for you.



### Non-Rewireable Mains Plug

If your appliance is supplied with a non-rewireable plug fitted to the mains lead and should the fuse need replacing, you must use an ASTA approved one (conforming to BS 1362 of the same rating).

If in doubt, consult a qualified electrician who will be pleased to do this for you.

If you need to remove the plug, **DISCONNECT IT FROM THE MAINS**, then cut it off the mains lead and immediately dispose of it safely. Never attempt to reuse the plug or insert it into a socket outlet as there is a danger of an electric shock.

**UP Global Sourcing UK Ltd.,  
UK. Manchester OL9 0DD.  
Germany. 51149 Köln.**

If this product does not reach you in an acceptable condition please contact our Customer Services Department at [www.salterhousewares.co.uk](http://www.salterhousewares.co.uk)

Please have your delivery note to hand as details from it will be required.

If you wish to return this product, please return it to the retailer from where it was purchased with your receipt (subject to their terms and conditions).

## **Guarantee**

All products purchased as new carry a manufacturer's guarantee; the time period of the guarantee will vary dependent upon the product. Where reasonable proof of purchase can be provided, Salter will provide a standard 12 month guarantee with the retailer from the date of purchase. This is only applicable when products have been used as instructed for their intended, domestic use. Any misuse or dismantling of products will invalidate any guarantee.

Under the guarantee, we undertake to repair or replace free of any charge any parts found to be defective. In the event that we cannot provide an exact replacement, a similar product will be offered or the cost refunded. Any damages from daily wear and tear are not covered by this guarantee, nor are consumables such as plugs, fuses etc.

Please note that the above terms and conditions may be updated from time to time and we therefore recommend that you check these each time you revisit the website.

Nothing in this guarantee or in the instructions relating to this product excludes, restricts or otherwise affects your statutory rights.

## **Disposal of Waste Batteries and Electrical and Electronic Equipment**



This symbol on the product, its batteries or its packaging means that this product and any batteries it contains must not be disposed of with household waste. Instead, it is the user's responsibility to hand this over to an applicable collection point for the recycling of batteries and electrical and electronic equipment. This separate collection and recycling will help to conserve natural resources and prevent potential negative consequences for human health and the environment due to the possible presence of hazardous substances in batteries and electrical and electronic equipment, which could be caused by inappropriate disposal. Some retailers provide take-back services which allow the user to return exhausted equipment for appropriate disposal. **It is the user's responsibility to delete any data on electrical and electronic equipment prior to disposal.** For more information about where to drop batteries, electrical and electronic waste off, please contact the local city/municipality office, household waste disposal service, or the retailer.

\*To be eligible for the extended guarantee, go to **guarantee.upgs.com/salter/** and register your product within 30 days of purchase.

**3**  
YEAR  
GUARANTEE\*

Find us on 

[www.facebook.com/SalterUK](http://www.facebook.com/SalterUK)

# SALTER®

Manufactured by:

UP Global Sourcing UK Ltd.,  
UK. Manchester OL9 0DD.  
Germany. 51149 Köln.

Made in China.

©Salter trademark. All rights reserved.



UK  
CA C E

