

Using the programmable timer function

The coffee maker has a 24-hour programmable timer function. To activate this, make sure the time on the LCD display is set correctly by pressing 'HOUR' and 'MIN' on the control panel.

**STEP 1:** Fill the coffee maker with the desired type of coffee and the appropriate amount of water, following the instructions in the section entitled 'Using the coffee maker'.

**STEP 2:** Select the desired coffee program using 'GROUND' or 'BEAN' on the control panel.

**STEP 3:** Once the desired program has been selected, press 'PROG' on the control panel; 'PROG' will show on the LCD display. A start time for the coffee brewing process can now be set.

**STEP 4:** Select the hour by pressing 'HOUR' on the control panel until the desired hour is shown on the LCD display. Select the minute by pressing 'MIN' on the control panel until the desired time is shown on the LCD display.

**STEP 5:** Once the desired hour and minute has been selected, leave the unit for approx. 5 seconds until 'AUTO' is displayed in the top right-hand corner of the LCD display. The timer is now set.



**NOTE:** Do not use the coffee maker whilst a timer is set, doing so will turn the timer off.

Hints and tips

- 1. Always use fresh cold water to fill the water reservoir.
- 2. The quantity of ground coffee can be adapted to suit taste. Use more for stronger coffee; use less for weaker coffee.
- 3. If using regular ground coffee, more is needed per cup to achieve the same strength as finer ground coffee.
- 4. After using packaged ground coffee, tightly reseal it and store in a cool, dry place.
- 5. To achieve an optimum coffee taste, use whole coffee beans and finely grind them using the coffee maker.
- 6. Do not reuse ground coffee, as this will greatly reduce its flavour.
- 7. Reheating coffee is not recommended as it interferes with the taste.

Storage

Make sure that the coffee maker is cool, clean and dry before storing. Do not wrap the power cord tightly around the coffee maker, as this could cause damage.

Specifications

Product code: EK4368  
Operating voltage: 220–240 V ~ 50/60 Hz  
Power: 550–650 W



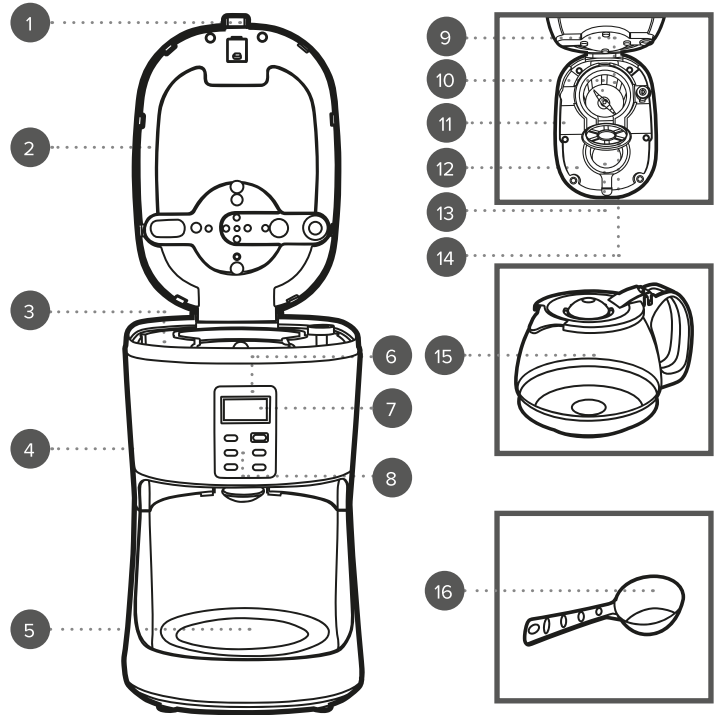
Disposal of Waste Batteries and Electrical and Electronic Equipment



This symbol on the product, its batteries or its packaging means that this product and any batteries it contains must not be disposed of with household waste. Instead, it is the user's responsibility to hand this over to an applicable collection point for the recycling of batteries and electrical and electronic equipment. This separate collection and recycling will help to conserve natural resources and prevent potential negative consequences for human health and the environment due to the possible presence of hazardous substances in batteries and electrical and electronic equipment, which could be caused by inappropriate disposal. Some retailers provide take-back services which allow the user to return exhausted equipment for appropriate disposal. **It is the user's responsibility to delete any data on electrical and electronic equipment prior to disposal.** For more information about where to drop batteries, electrical and electronic waste off, please contact the local city/municipality office, household waste disposal service, or the retailer.

User manual

Coffee maker



- |                                       |                             |
|---------------------------------------|-----------------------------|
| 1. Water reservoir lid release button | 9. Removable funnel         |
| 2. Water reservoir lid                | 10. Coffee grinding blade   |
| 3. Brewing chamber                    | 11. Water max. fill mark    |
| 4. Coffee maker main unit             | 12. Water reservoir         |
| 5. Keep warm plate                    | 13. Removable coffee filter |
| 6. Indicator light                    | 14. Coffee filter lid       |
| 7. LCD display                        | 15. Glass coffee jug        |
| 8. Control panel                      | 16. Spoon                   |

Manufactured by:  
Ultimate Products UK Ltd.,  
Victoria Street, Manchester OL9 0DD. **UK.**  
Ultimate Products Europe Ltd.,  
19 Baggot Street Lower, Dublin D02 X658. **ROI.**  
**MADE IN CHINA.**

## SAFETY INSTRUCTIONS

- When using electrical appliances, basic safety precautions should always be followed.
- Check that the voltage indicated on the rating plate corresponds with that of the local network before connecting the appliance to the mains power supply.
- Children aged from 8 years and people with reduced physical, sensory or mental capabilities or lack of experience and knowledge can use this appliance, only if they have been given supervision or instruction concerning use of the appliance in a safe way and understand the hazards involved.
- Children should be supervised to ensure that they do not play with the appliance.
- Unless they are older than 8 and supervised, children should not perform cleaning or user maintenance.
- This appliance is not a toy.
- If the power supply cord, plug or any part of the appliance is malfunctioning or if it has been dropped or damaged, cease using the product immediately to avoid potential injury.
- This appliance contains no user serviceable parts, only a qualified electrician should carry out repairs. Improper repairs may place the user at risk of harm.
- Keep the appliance and its power supply cord out of the reach of children.
- Keep the appliance and its power supply cord away from heat or sharp edges that could cause damage.
- Keep the power supply cord away from any parts of the appliance that may become hot during use.
- Keep the appliance away from heat emitting appliances.
- Do not leave the appliance within reach of children.
- Do not allow the mains plug to hang over worktops, touch hot surfaces or become twisted.
- Do not immerse the electrical components of this appliance in water or any other liquid.
- Do not operate the appliance with wet hands.
- Do not leave the appliance unattended whilst connected to the mains power supply.
- Do not overload the appliance; only fill up to the maximum level marked on the appliance.
- Do not remove the appliance from the mains power supply by pulling the cord; switch it off and remove the plug by hand.
- Do not use the appliance for anything other than its intended use.
- Do not use any accessories other than those supplied.

- Do not use this appliance outdoors.
- Do not store the appliance in direct sunlight or in high humidity conditions.
- Do not move the appliance whilst it is in use.
- Do not touch any sections of the appliance that may become hot or the heating components of the appliance, as this could cause injury.
- Do not place boiling water or very hot liquid in the appliance.
- Always unplug the appliance after use and before any cleaning or user maintenance.
- Always ensure that the appliance has cooled fully after use before performing any cleaning or maintenance or storing away.
- Always use the appliance on a stable, heat resistant surface, at a height that is comfortable for the user.
- Use of an extension cord with the appliance is not recommended.
- This appliance should not be operated by means of an external timer or separate remote control system.
- This appliance is intended for domestic use only. It should not be used for commercial purposes.
- The outer surface of the appliance may get hot during operation.



**CAUTION:** Boiling water and steam can cause serious injury; exercise extreme caution when using this appliance. Hot surface – do not touch the hot section or heating components of the appliance.



**WARNING:** Keep the appliance away from flammable materials. Sharp blades; proceed with caution.

## Care and maintenance

Always check that the coffee maker is unplugged from the mains power supply and has cooled fully before performing any cleaning or user maintenance.

Never immerse the coffee maker main unit in water or any other liquid.

Wipe the coffee maker main unit with a soft, damp cloth and allow to dry thoroughly.

Do not use harsh or abrasive scourers to clean the coffee maker, as this could cause damage.

Remove and clean the removable coffee filter and funnel after every use. Wash in warm, soapy water, then rinse and dry thoroughly before refitting them in place on the coffee maker. Clean the glass coffee jug in warm, soapy water. Rinse and dry thoroughly before storing.

## Instructions for use

### Before first use

Before using the coffee maker for the first time, remove all accessories and wash them in warm, soapy water, then rinse and dry thoroughly.



**NOTE:** When using the coffee maker for the first time, a slight odour may be emitted. This is normal and will soon subside. Allow for sufficient ventilation around the coffee maker.

### Using the coffee maker

**STEP 1:** Make sure the coffee maker is switched off and unplugged from the mains power supply and that all of the accessories are in place.

**STEP 2:** Open the water reservoir lid by pushing the water reservoir lid release button. Open the coffee filter lid and add 35–40 g of regular ground coffee or coffee beans directly into the brewing chamber before closing the coffee filter lid.

**STEP 3:** Pour up to 750 ml of fresh cold water into the water reservoir and close the water reservoir lid so that it clicks into place.

**STEP 4:** Place the glass coffee jug onto the coffee maker base, aligning it with the keep warm plate.

**STEP 5:** Plug in and switch on the coffee maker at the mains power supply.



**NOTE:** The time of day can be amended on the LCD display at any point using 'HOUR' and 'MIN'.

### Brewing coffee

**STEP 1:** For brewing ground coffee, press 'GROUND' on the control panel; the ground logo '☕' will appear on the LCD display. For brewing coarse coffee beans, press 'BEAN' on the control panel and cycle through the options until the coarse coffee logo '☕' appears on the LCD display. For brewing fine coffee beans, press 'BEAN' on the control panel and cycle through the options until the fine coffee logo appears on the LCD display '☕'.

**STEP 2:** Once the correct option has been selected, press 'START' to begin the brewing cycle. The indicator light will flash green to signal the coffee maker is in operation. The coffee maker will remain powered on until the brewing cycle is complete. To interrupt or stop brewing mid cycle, press 'START'.

**STEP 3:** Once all of the coffee has dripped from the brewing chamber into the glass coffee jug, the indicator light will turn solid green to signal that the brewing cycle is complete.

**STEP 4:** Remove the glass coffee jug from the keep warm plate; it is recommended to wait 1–2 minutes before doing this to allow the coffee maker to cool and let any excess water to drip into the glass coffee jug. Take care when handling, as the glass coffee jug is likely to have become hot during operation.



**NOTE:** The glass coffee jug can be kept on the warm plate for approx. 38 minutes post brewing.



**CAUTION:** Do not switch on the coffee maker without any water in the water reservoir. Do not open the water reservoir lid during brewing, as this will halt the brewing cycle and allow steam to escape from the coffee maker, which could cause scalding or burns.

**WARNING:** Allow the coffee maker to cool for approx. 3 minutes before making a second cup of coffee. If the coffee maker does not cool completely before reuse, water in the water reservoir may overheat and hot steam may escape, which could cause injury to the user.