



**CAUTION:** Switch off the hand mixer before adding or removing food from the mixing jug or bowl.

**WARNING:** Do not use with very hot or boiling liquid, as this may cause injury. Maximum operation time is 3 minutes. Allow to cool for 5 minutes before using the hand mixer again; this will prevent damage to the motor.

Indicator lights  
Battery remaining indicator

X X X	66–100% charge
X X	33–65% charge
X	20–30% charge
X (Flashing)	<20% charge and the hand mixer needs to be charged

Charging indication (indicator lights whilst charging)

X X X (Flashing)	<33% charge
X (Solid) X X (Flashing)	33–65% charge
X X (Solid) X (Flashing)	66–99% charge
X X X (Solid)	>99% charge

Motor cut-off indication

The motor has an automatic protection system that will not allow overloading or overheating. If the load is too large, or the hand mixer is used for too long, it will automatically shut off. If the hand mixer senses an overload situation, all 3 indicator lights will flash 5 times and the hand mixer will turn off. Slide the 3-speed selector switch to '0' and the indicator lights will turn off. Reduce the load on the hand mixer, allow it to rest for 15 minutes and then resume use.

Troubleshooting

Problem	Possible cause	Solution
The hand mixer will not operate.	The hand mixer is not charged.	Charge the hand mixer following the instructions in the section entitled 'Charging the hand mixer.'
The attachments will not move when in contact with ingredients.	The mixture is too dry.	Add liquid to the mixture.

Storage

Check that the hand mixer is cool, clean and dry before storing in a cool, dry place. For tidy storage, place the attachments into the holder on the storage base.

Specifications

Product code: EK5395  
Product output: DC 7.2 V 50 W  
Adaptor input: 100–240 V ~ 50/60 Hz 0.5 A Max  
Adaptor output: 5 V DC 2.0 A 10 W  
Average active efficiency: ≥78.70%  
Efficiency at low load (10%): ≥73%  
No-load power consumption: ≤0.1 W



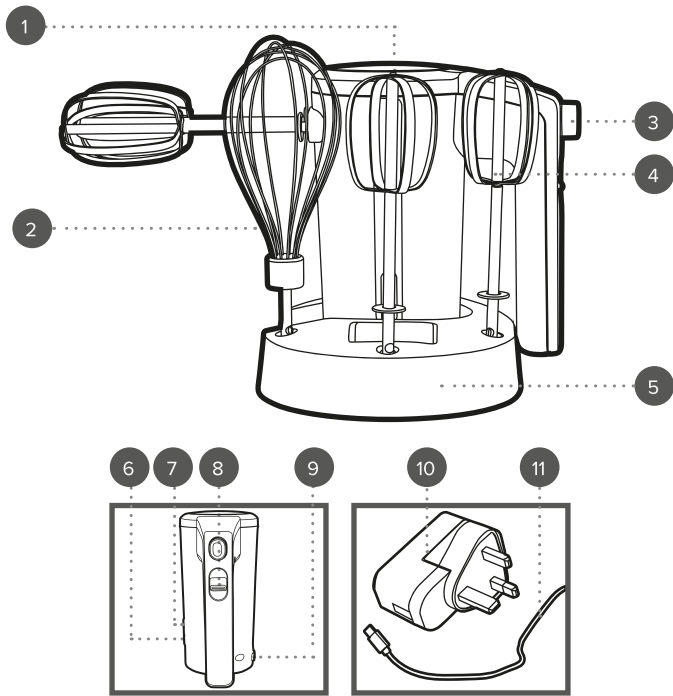
Disposal of Waste Batteries and Electrical and Electronic Equipment



This symbol on the product, its batteries or its packaging means that this product and any batteries it contains must not be disposed of with household waste. Instead, it is the user's responsibility to hand this over to an applicable collection point for the recycling of batteries and electrical and electronic equipment. This separate collection and recycling will help to conserve natural resources and prevent potential negative consequences for human health and the environment due to the possible presence of hazardous substances in batteries and electrical and electronic equipment, which could be caused by inappropriate disposal. Some retailers provide take-back services which allow the user to return exhausted equipment for appropriate disposal. **It is the user's responsibility to delete any data on electrical and electronic equipment prior to disposal.** For more information about where to drop batteries, electrical and electronic waste off, please contact the local city/municipality office, household waste disposal service, or the retailer.

# User manual

## Hand mixer



1. Hand mixer motor unit

2. Whisk attachment

3. Attachment eject button

4. Beater attachment

5. Storage base

6. Power indicator light
7. Charge indicator light

8. 3-speed selector switch

9. Charging port

10. Charging adaptor

11. USB Type-C charging cable

Manufactured by:  
Ultimate Products UK Ltd.,  
Victoria Street, Manchester OL9 0DD. **UK.**  
Ultimate Products Europe Ltd.,  
19 Baggot Street Lower, Dublin D02 X658. **ROI.**  
**MADE IN CHINA.**

Please retain instructions for future reference.

## SAFETY INSTRUCTIONS

- When using electrical appliances, basic safety precautions should always be followed.
- Check that the voltage indicated on the rating plate corresponds with that of the local network before connecting the appliance to the mains power supply.
- Children aged from 8 years and people with reduced physical, sensory or mental capabilities or lack of experience and knowledge can use this appliance, only if they have been given supervision or instruction concerning use of the appliance in a safe way and understand the hazards involved.
- Children should be supervised to ensure that they do not play with the appliance.
- Unless they are older than 8 and supervised, children should not perform cleaning or user maintenance.
- This appliance is not a toy.
- If the charging cable, plug or any part of the appliance is malfunctioning or if it has been dropped or damaged, cease using the product immediately to avoid potential injury.
- This appliance contains no user serviceable parts, only a qualified electrician should carry out repairs. Improper repairs may place the user at risk of harm.
- Keep the appliance and its charging cable out of the reach of children.
- Keep the appliance out of the reach of children when it is switched on or cooling down.
- Keep the appliance and its charging cable away from heat or sharp edges that could cause damage.
- Keep hands, fingers, hair and any loose clothing away from the rotating tools of the appliance.
- Do not immerse the electrical components of this appliance in water or any other liquid.
- Do not operate the appliance with wet hands.
- Do not leave the appliance unattended whilst connected to the mains power supply.
- Do not remove the appliance from the mains power supply by pulling the charging cable; switch it off and remove the plug by hand.
- Do not pull or carry the appliance by its charging cable.
- Do not use the appliance if it has been dropped, if there are visible signs of damage or if it is leaking.
- Do not use the appliance for anything other than its intended use.
- Do not use any accessories other than those supplied.
- Do not use any damaged attachments.
- Do not use this appliance outdoors.
- Do not store the appliance in direct sunlight or in high humidity conditions.
- Do not touch any moving parts on this appliance during use, as this could cause injury.

- Do not touch any sections of the appliance that may become hot during use, as this could cause injury.
- Do not cover the air vents during use, as this may cause the appliance to overheat.
- Do not use broken or loose attachments.
- Always unplug the appliance after use and before any cleaning or user maintenance.
- Always ensure that the appliance has cooled fully after use before performing any cleaning or maintenance.
- Use of an extension cord with the appliance is not recommended.
- This appliance should not be operated by means of an external timer or separate remote control system.
- This appliance is intended for domestic use only. It should not be used for commercial purposes.

### Rechargeable batteries (non-removable)

The supply terminals are not to be short-circuited.

In the event of a battery and cell leaking, do not allow the liquid to come in contact with the skin or eyes. If contact has been made, wash the affected area with copious amounts of water and seek medical advice.

Secondary cells and batteries need to be charged before use. After extended periods of storage, it may be necessary to charge and discharge the cells or batteries several times to obtain maximum performance.

Keep batteries out of the reach of children.

Do not crush, puncture, dismantle or otherwise damage batteries.

Do not store above 60 °C.

Avoid storage in direct sunlight.

Do not dispose of exhausted batteries in household waste.

Do not expose the batteries to heat or fire as they may explode.

Once the batteries have been exhausted, dispose of the product at a local recycling station. Contact the local government offices for further details.

This product is fitted with a 2000 mAh Li-ion battery (non-removable).

### Care and maintenance

**STEP 1:** Switch off and unplug the hand mixer from the mains power supply before performing any cleaning or user maintenance.

**STEP 2:** Wipe the hand mixer motor unit with a soft, damp cloth and allow to dry thoroughly.

**STEP 3:** Wash all of the attachments in warm, soapy water, then rinse and dry thoroughly.

Do not immerse the hand mixer motor unit in water or any other liquid.

Do not use harsh or abrasive detergents or scourers to clean the hand mixer, as this could cause damage.

The hand mixer is not suitable for use in a dishwasher.



**NOTE:** Always clean the hand mixer immediately after each use.

### Instructions for use

#### Before first use

**STEP 1:** Clean the hand mixer and its attachments following the instructions in the section entitled 'Care and maintenance'.

**STEP 2:** Place the hand mixer motor unit onto a stable, heat-resistant surface, at a height that is comfortable for the user.



**NOTE:** When using the hand mixer for the first time, a slight odour may be emitted. This is normal and will soon subside. Allow for sufficient ventilation around the hand mixer.



**WARNING:** Do not immerse the hand mixer motor unit in water or any other liquid. Never use harsh or abrasive cleaning detergents or scourers to clean the hand mixer or its attachments, as this could cause damage.

### Charging the hand mixer

**STEP 1:** Open the charging port on the hand mixer motor unit and insert the USB Type-C end of the USB charging cable.

**STEP 2:** Insert the USB end of the USB charging cable into the charging adaptor.

**STEP 3:** Plug the charging adaptor into the mains power supply; the indicator lights will flash during charging and will stop when the battery is fully charged. See the section entitled 'Indicator lights' for further details.



**NOTE:** The blender comes supplied with approximately 30% charge in the batteries. However, for best performance, it is recommended to fully charge the blender before first use; this will take approximately 5 hours. The blender can also be charged whilst stored in its storage base.



**CAUTION:** The jug blender should only be charged using the adaptor and cable provided (DZ012ELU050200B). Do not use the adaptor or cable with any other appliance.

### Using the hand mixer

All attachments must be securely fitted before use; do not attempt to remove them until the attachment has stopped moving.

The whisk attachment is ideal for mixing light ingredients such as egg whites, cream and instant desserts.

**STEP 1:** Carefully secure the required attachments by aligning the tabs with the slots in the hand mixer motor unit and pushing in until they click into place.

**STEP 2:** Place the food to be prepared into a mixing jug or bowl, then switch on the hand mixer; do not overfill.

**STEP 3:** With the attachments secure, lower the hand mixer into the mixing jug or bowl and then move the 3-speed selector switch to the desired speed setting.

**STEP 4:** Slowly move the hand mixer in a clockwise direction to avoid splashing. Once mixing is complete, move the 3-speed selector switch back to '0' to switch off the hand mixer.

**STEP 5:** Make sure that the attachment has completely stopped before removing from the hand mixer motor unit. To remove the attachments, gently pull them outwards away from the hand mixer motor unit while holding down the attachment eject button.



**NOTE:** Whilst mixing liquid, especially hot liquid, use a tall container or whisk small quantities to reduce spillage, splattering and the possibility of injury from scalding. Slowly build up to the required speed setting.