

# User manual

## Egg cooker

**STEP 4:** Pour the cold water using the measuring cup onto the heating plate; do not go below the minimum fill mark or exceed the maximum fill mark. Place the removable egg tray on top.  
**STEP 5:** Prepare the number of eggs to be cooked (up to 8 eggs at once). Use the egg piercer to create a small hole in the larger end of each egg and then place them securely into the holes in the removable egg tray. This will prevent the eggs from breaking during the cooking process.

**STEP 6:** Place the lid back onto the egg cooker.

**STEP 7:** Plug in and switch on the egg cooker at the mains power supply.

**STEP 8:** Select the required cooking time by rotating the timer control dial in a clockwise direction. The power indicator light will illuminate indicating the egg cooker is heating up.

**STEP 9:** Allow the eggs to cook according to the set timer. Once the timer has counted down it will ring once and the power indicator light will turn off.

**STEP 10:** Remove the lid with caution as steam will be emitted from the egg cooker. Carefully remove the eggs; they will have become hot during the cooking process.



**NOTE:** Cooking times are approximate and may vary depending on the size of the egg and water used. The egg cooker works best for medium sized eggs. For larger/smaller eggs it may be necessary to adjust the amount of water used. Wait for the egg cooker to cool down before removing any excess water that may remain on the heating plate after cooking. If the eggs are cooked before the timer has counted down, rotate the timer control dial to '0' to turn the egg cooker off.



**CAUTION:** Do not touch the lid during the cooking process, as it will become extremely hot. The piercing pin on the underside of the water measuring cup is very sharp. Use extreme caution when handling.

### To make poached eggs

**STEP 1:** Check that the egg cooker is switched off and unplugged from the mains power supply and place it onto a clean, dry, stable surface, at a height that is comfortable for the user.  
**STEP 2:** Remove the lid and then take out the removable egg tray and egg poachers from the egg cooker.

**STEP 3:** Fill the measuring cup with cold water; do not go below the minimum fill mark or exceed the maximum fill mark. Pour the cold water onto the heating plate.

**STEP 4:** Lightly coat the egg poacher with oil or butter. Break one egg into the poacher.

**STEP 5:** Place the removable egg tray onto the egg cooker, place the egg poachers on top of the removable egg tray and then close the lid.

**STEP 6:** Plug in and switch on the egg cooker at the mains power supply.

**STEP 7:** Select the required cooking time by rotating the timer control switch in a clockwise direction. The power indicator light will illuminate indicating the unit is heating up.

**STEP 8:** Allow the eggs to cook according to the set timer. Once the timer has counted down it will ring once, and the power indicator light will turn off.

**STEP 9:** Remove the lid with caution as steam will be emitted from the egg cooker. Using a small heat-resistant plastic or wooden spatula, carefully remove the poached eggs from the egg poachers. Remove the eggs immediately to prevent over-poaching.



**NOTE:** The cooking time is approx. 9 minutes to poach an egg.

### Storage

Check that the egg cooker is cool, clean and dry before storing in a cool, dry place. Never wrap the cord tightly around the egg cooker; wrap it loosely to avoid causing damage.

### Specifications

Product code: EK6213

Operating voltage: 220–240 V ~ 50/60 Hz

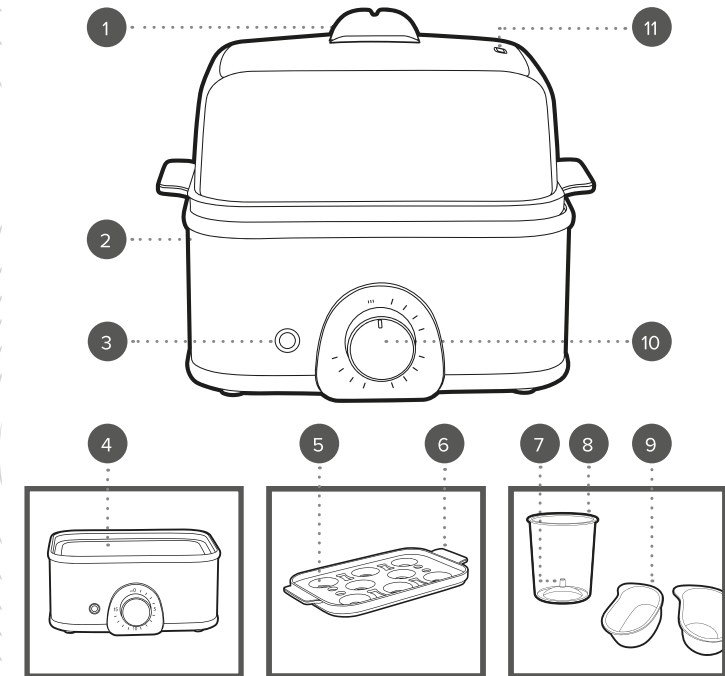
Power: 400–500 W



#### Disposal of Waste Batteries and Electrical and Electronic Equipment



This symbol on the product, its batteries or its packaging means that this product and any batteries it contains must not be disposed of with household waste. Instead, it is the user's responsibility to hand this over to an applicable collection point for the recycling of batteries and electrical and electronic equipment. This separate collection and recycling will help to conserve natural resources and prevent potential negative consequences for human health and the environment due to the possible presence of hazardous substances in batteries and electrical and electronic equipment, which could be caused by inappropriate disposal. Some retailers provide take-back services which allow the user to return exhausted equipment for appropriate disposal. **It is the user's responsibility to delete any data on electrical and electronic equipment prior to disposal.** For more information about where to drop batteries, electrical and electronic waste off, please contact the local city/municipality office, household waste disposal service, or the retailer.



1. Lid handle
2. Egg cooker main body
3. Power indicating light
4. Heating plate
5. Removable egg tray
6. Removable egg tray handle

7. Egg piercer
8. Measuring cup
9. Egg poachers
10. Timer control dial
11. Lid with steam vent

Manufactured by:  
Ultimate Products UK Ltd.,  
Victoria Street, Manchester OL9 0DD. **UK.**  
Ultimate Products Europe Ltd.,  
19 Baggot Street Lower, Dublin D02 X658. **ROI.**

**MADE IN CHINA.**

CD170424/MD000000/V1



## SAFETY INSTRUCTIONS

- When using electrical appliances, basic safety precautions should always be followed.
- Check that the voltage indicated on the rating plate corresponds with that of the local network before connecting the appliance to the mains power supply.
- This appliance can be used by children aged from 8 years and above and persons with reduced physical, sensory or mental capabilities and knowledge, if they have been supervised/instructed and understand the hazards involved.
- Children shall not play with the appliance.
- Children should not perform cleaning or user maintenance, unless they are older than 8 and supervised.
- This appliance is not a toy.
- If the power supply cord, plug or any part of the appliance is malfunctioning or if it has been dropped or damaged, cease using the product immediately to avoid potential injury.
- This appliance contains no user serviceable parts, only a qualified electrician should carry out repairs. Improper repairs may place the user at risk of harm.
- Keep the appliance and its power supply cord out of the reach of children.
- Keep the appliance out of the reach of children when it is switched on or cooling down.
- Keep the appliance and its power supply cord away from heat or sharp edges that could cause damage.
- Keep the power supply cord away from any parts of the appliance that may become hot during use.
- Keep the appliance away from other heat emitting appliances.
- Do not allow the power supply cord to hang over worktops, touch hot surfaces or become twisted.
- Do not immerse the electrical components of the appliance in water or any other liquid.
- Do not operate the appliance with wet hands or if any connections are wet.
- If this appliance falls or accidentally becomes immersed in water, unplug it from the wall outlet immediately. Do not reach into the water.
- Do not leave the appliance unattended whilst connected to the mains power supply.

- Do not remove the appliance from the mains power supply by pulling the cord; switch it off and remove the plug by hand.
- Do not pull or carry the appliance by its power supply cord.
- Do not use the appliance for anything other than its intended use.
- Do not use any accessories other than those supplied.
- Do not use this appliance outdoors.
- Do not store the appliance in direct sunlight or in high humidity conditions.
- Do not move the appliance whilst it is in use.
- Always unplug the appliance after use and allow it to cool fully before any cleaning, user maintenance or storing away.
- Always use the appliance on a stable, heat-resistant surface, at a height that is comfortable for the user.
- This appliance should not be operated by means of an external timer or separate remote control system.
- Use of an extension cord with the appliance is not recommended.
- This appliance is intended for domestic use only. It should not be used for commercial purposes.



**CAUTION:** Hot surface – do not touch hot sections or heating components of the appliance.



**WARNING:** Keep the appliance away from flammable materials.

### Dos and don'ts

#### DO:

Switch off the egg cooker and disconnect it from the mains power supply before changing or fitting attachments.

#### DON'T:

Use attachments if they are loose, damaged or broken.

### Care and maintenance

**STEP 1:** Switch off and unplug the egg cooker from the mains power supply. Allow the egg cooker to cool fully before performing any cleaning or maintenance.

**STEP 2:** Wipe the egg cooker main body with a soft, damp cloth and allow to dry thoroughly.

**STEP 3:** Wash all of the accessories in warm, soapy water, then rinse and dry thoroughly.

Do not use harsh or abrasive scourers to clean the egg cooker, as this could cause damage.



**NOTE:** The egg cooker should be cleaned after each use.

### Removing limescale/scorch marks

Limescale/scorch marks can develop over time around the heating plate, affecting the performance and lifespan of the egg cooker. It is recommended to use a commercial descaling agent to remove limescale from the egg cooker regularly, at least once a month.

**STEP 1:** Add the descaling solution to the heating plate, following the manufacturer's instructions.

**STEP 2:** Plug in and switch on the egg cooker at the mains power supply, then press the power button to turn on the egg cooker.

**STEP 3:** After approx. 15 minutes, press the power button to turn off the egg cooker. Allow it to cool before emptying the heating plate and wiping it several times with a soft, damp cloth. Leave to dry thoroughly.



**CAUTION:** This process will cause steam to escape which could cause scalding. Allow for sufficient ventilation around the egg cooker during this process.



**WARNING:** Do not leave the egg cooker unattended whilst removing limescale.

### Instructions for use

#### Before first use

Before connecting to the mains power supply, clean the egg cooker following the instructions in the section entitled 'Care and maintenance'.



**NOTE:** When using the egg cooker the first time, a slight odour may be emitted. This is normal and will soon subside. Allow for sufficient ventilation around the egg cooker.

### Using the egg cooker

#### To make boiled eggs

**STEP 1:** Check that the egg cooker is switched off and unplugged from the mains power supply and place it onto a clean, dry, stable surface, at a height that is comfortable for the user.

**STEP 2:** Remove the lid and take out the removable egg tray and egg poachers from the egg cooker.

**STEP 3:** Determine the desired consistency of the eggs to be cooked (**soft**, **medium**, **hard-boiled** or **poached**). Use the table below for a guide.

Consistency of egg	Water quantity	Approx. cooking time
Poached	260 ml	9 mins
Soft	225 ml	9 mins
Medium	250 ml	10 mins
Hard	280 ml	13 mins