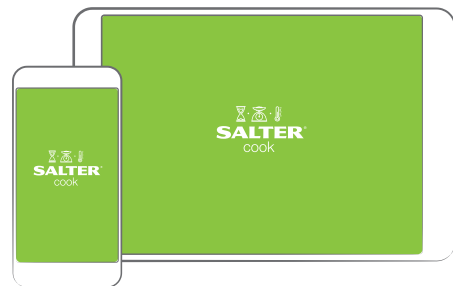


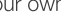
Download



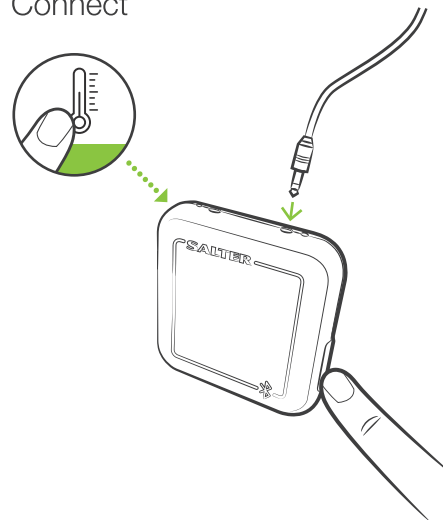
- 1 To help you achieve the perfect bake link your Bluetooth Kitchen Thermometer to the Salter Cook App.


Add Recipe



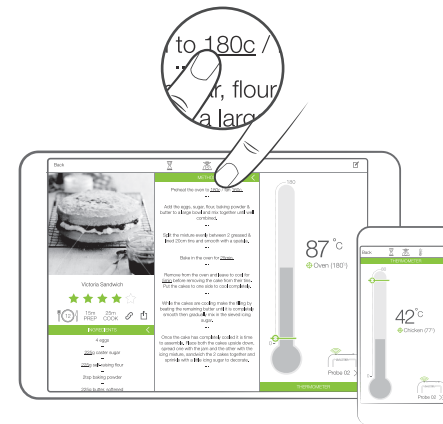
- 2 Follow these instructions to import recipes from a website. To type in your own recipe select the  icon in the menu bar.


Connect



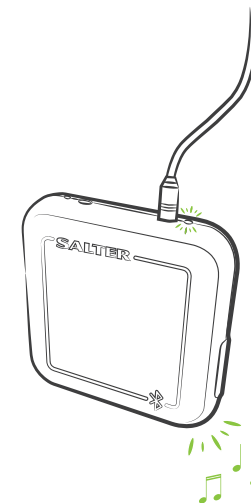
- 3 Select the  icon in the Salter Cook App, plug in the probes & turn on the thermometer. The app and scale will automatically connect.

Set Target



- 4 To set a target either select a temperature in the recipe or click the  icon when in thermometer mode.

Finish



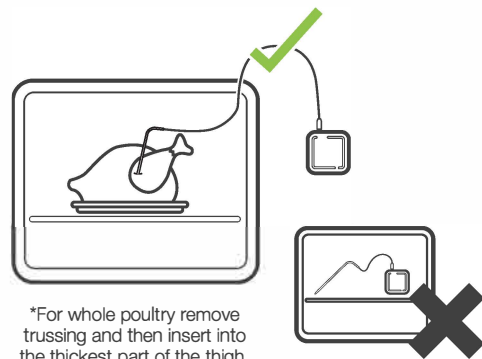
- 5 Once the target temperature has been reached an alarm will sound & target LED will light.

Care



Probe Thermometer

Insert the tip of the probe into the centre of the meat*, ensuring it is not in contact with bone, fat or gristle. If using in the oven, carefully close the door onto the cord and position the display unit near the oven.



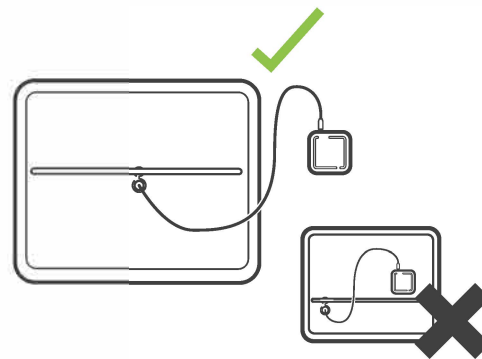
*For whole poultry remove trussing and then insert into the thickest part of the thigh.



Always ensure the cord is positioned out of the reach of children. • Do not use in oven temperatures above 250°C / 482°F. • Keep the cord end of the probe clear of the oven walls and heating elements. • Never place the display unit inside the oven or grill or on direct heat. • Never use the probe to lift or turn food items.

Oven Thermometer

Use the oven rack hook to position the probe as central as possible, away from the sides of the oven. Carefully close the oven door onto the cord and position the display unit near the oven.



Controls

Target



Flashing = Target received
Lit = Target reached



Bluetooth



Off = No power
Lit = Not connected
Flashing = Connected


SALTER®
cook

Quick Start
Guide

FKA Brands Ltd, Somerhill Business Park, Five Oak Green Road, Tonbridge, Kent, TN11 0GP
Customer support: support@salterhousewares.co.uk / www.salterhousewares.co.uk
HoMedics Australia Pty Ltd, 14 Kingsley Close, Rowville, VIC 3178, Australia

IB-Mini-593-1219-03

