

SALTER®

SINCE 1760



29.6 V Cordless Max

Lightweight, flexible and versatile cleaning

SALTER®

29.6 V Cordless Max

Lightweight, flexible and versatile cleaning

CONTENTS	PAGE
Safety Instructions	3–4
Battery Safety	4–5
Dos and Don'ts	5
Care and Maintenance	6
Getting Started	6
Features	6
In the Box	6
Description of Parts	7
Instructions for Use	8
Assembling the 29.6 V Cordless Max Vacuum Cleaner	8
Assembling the Battery Charging Station	9
Charging the 29.6 V Cordless Max Vacuum Cleaner	9
Using the Battery Charging Station	9
Using the 29.6 V Cordless Max	10
As an Upright Vac	10
As a Handheld Vac	10
Emptying the Dust Container	10–11
Cleaning the HEPA Filter	11
Cleaning the Airflow Chamber	11–12
Cleaning the Electric Floor Brush	12
Storage	12
Specifications	12
Troubleshooting	13
Guarantee	14

Please read all of the instructions carefully and retain for future reference.

Safety Instructions

When using electrical appliances, basic safety precautions should always be followed.

Check that the voltage indicated on the rating plate corresponds with that of the local network before connecting the appliance to the mains power supply.

Children aged from 8 years and people with reduced physical, sensory or mental capabilities or lack of experience and knowledge can use this appliance, only if they have been given supervision or instruction concerning use of the appliance in a safe way and understand the hazards involved.

Children should be supervised to ensure that they do not play with the appliance.

Unless they are older than 8 and supervised, children should not perform cleaning or user maintenance.

This appliance is not a toy.

This appliance contains no user serviceable parts. If the power supply cord, plug or any part of the appliance is malfunctioning or if it has been dropped or damaged; only a qualified electrician should carry out repairs. Improper repairs may place the user at risk of harm.

Keep the appliance out of the reach of children.

Keep the appliance and its supply cord away from heat or sharp edges that could cause damage.

Keep the appliance free from dust, lint, hair or anything that may reduce the airflow of the appliance.

Do not use the appliance with wet hands.

Do not use this appliance if any of the openings are blocked.

Do not use the appliance to pick up flammable liquid, matches, cigarette ends, hot ashes or any hot, burning or smoking objects.

Do not use this appliance to pick up hard, sharp objects such as glass or nails etc.

Do not fit any parts/accessories other than the parts supplied with this appliance, as this may cause damage.

Do not use the appliance to pick up water or any other liquid, as this poses risk of an electric shock.

Do not immerse the appliance in water or any other liquid.

Do not use the appliance for anything other than its intended use.

Do not use this appliance outdoors.

Do not leave the appliance unattended whilst connected to the mains power supply.

Do not remove from the mains power supply by pulling the cord; switch off and remove the plug by hand.

Do not store the appliance in direct sunlight or in high humidity conditions.

Always unplug the appliance after use and before any cleaning or maintenance.

Use of an extension cord with the appliance is not recommended.

This appliance should not be operated by means of an external timer or separate remote control system.

This appliance is intended for domestic use only. It should not be used for commercial purposes.

Battery Safety

The supply terminals are not to be short-circuited.

If the battery pack becomes exhausted, it should be removed from the product to avoid leakage.

In the event of the battery pack leaking, do not allow any liquid to come into contact with the skin or eyes.

If contact has been made, wash the affected area with copious amounts of water and seek medical advice.

Keep battery pack out of the reach of children.

Avoid storing in direct sunlight.

Do not dispose of the battery pack in a fire.

Do not crush, puncture, dismantle or otherwise damage the battery pack.

Do not store above 60 °C.

Do not expose the battery pack to heat or fire as it may explode.

Do not subject the battery pack to mechanical shock.

Do not dispose of the exhausted battery pack in household waste.

To dispose of the exhausted battery pack, take it to a local recycling station. Contact the local government offices for further details.

This product is fitted with a 29.6 V 2150 mAh Li-ion battery pack (non-removable).

Dos and Don'ts

Do:

Check that the HEPA filter is kept clear of obstruction.

Make sure that the dust container and HEPA filter are cleaned regularly to preserve suction and to prolong the life of the 29.6 V Cordless Max Vacuum Cleaner.

Keep the electric floor brush free from built-up dust and dirt.

Clean the brush bar on a regular basis.

Don't:

Use the 29.6 V Cordless Max Vacuum Cleaner without the HEPA filter or dust container in position.

Use the 29.6 V Cordless Max Vacuum Cleaner to pick up liquid, matches, cigarette ends, hot ashes or any hot, burning or smoking objects.

Empty the dust container indoors.

Care and Maintenance

Always unplug the 29.6 V Cordless Max Vacuum Cleaner from the mains power supply before attempting any cleaning or maintenance.

Wipe the external surface of the 29.6 V Cordless Max Vacuum Cleaner with a soft, damp cloth and allow to dry thoroughly. Do not use harsh or abrasive cleaning detergents or scourers to clean any part of the 29.6 V Cordless Max Vacuum Cleaner. Keep the filter clean and replace it when it becomes worn.

Getting Started

Remove the appliance from the box.
Remove any packaging from the appliance.
Place the packaging inside the box and either store or dispose of safely.

In the Box

29.6 V Cordless Max Vacuum Cleaner	Crevice tool
Battery charging station	Brush tool
Mains power adaptor	Instruction manual
Electric floor brush	

Features

29.6 V rechargeable lithium-ion battery	Foldable handle
Ergonomic and lightweight: less than 2.5 kg	Brush tool, crevice tool and electric floor brush with LED lights
Removable 300 ml dust container	HEPA filter
Charging station	Two speed settings including boost function
Up to 60 minutes running time	
3–4 hours charge time	

Description of Parts



- | | |
|-------------------------------------------------|------------------------------------------------------------------------|
| 1. 29.6 V Cordless Max Vacuum Cleaner main body | 13. Dust container release button |
| 2. Main body handheld cradle | 14. HEPA filter |
| 3. Upright power button | 15. Indicator light |
| 4. Upright vac suction nozzle | 16. Electric floor brush |
| 5. Foldable handle | 17. Electric floor brush release button (on reverse of vacuum cleaner) |
| 6. Foldable handle release button | 18. Brush bar |
| 7. Handheld vac unit | 19. Brush bar release button |
| 8. Handheld vac suction nozzle | 20. LED light |
| 9. Handheld vac handle | 21. Battery charging station |
| 10. Handheld vac release button | 22. Battery charging socket |
| 11. Handheld power button | 23. Brush tool |
| 12. Dust container | 24. Crevice tool |

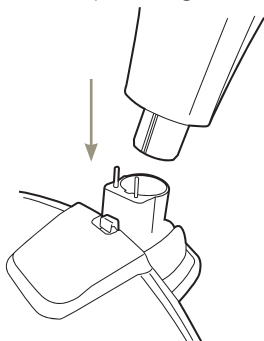
Instructions for Use

Assembling the 29.6 V Cordless Max Vacuum Cleaner

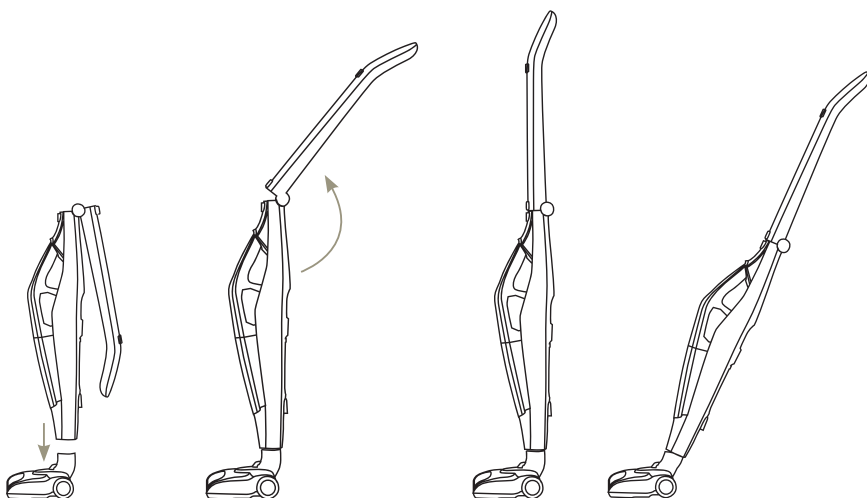
STEP 1: Check that the 29.6 V Cordless Max Vacuum Cleaner is unplugged from the mains power supply.

STEP 2: Fit the handheld vac unit by inserting the suction nozzle end into the main body handheld cradle and then push the handheld vac handle in towards the vacuum cleaner main body until it locks into position.

STEP 3: Insert the upright vac suction nozzle at the bottom of the 29.6 V Cordless Max Vacuum Cleaner main body into the electric floor brush, so that the locking tab and pins are aligned and then push together until it locks into position.



STEP 4: Open out the foldable handle by lifting it away from the 29.6 V Cordless Max Vacuum Cleaner main body, until it locks into the upright position.



Assembling the Battery Charging Station

STEP 1: Position the battery charging station where it will be within reach of a mains power supply.

STEP 2: Insert the accessory holder into the base of the battery charging station.

STEP 3: Store the attachments on the accessory holder and slide the 29.6 V Cordless Max Vacuum Cleaner onto the battery charging station, making sure that it fully engages with the battery charging socket.

STEP 4: Connect the lead from the mains power adaptor to the back of the battery charging station.

Charging the 29.6 V Cordless Max Vacuum Cleaner

Before first use, the 29.6 V Cordless Max Vacuum Cleaner must be charged for approx. 3–4 hours. Subsequent charging times will vary dependent upon use. If the 29.6 V Cordless Max Vacuum Cleaner runs down completely during use, it may take up to 3–4 hours to fully recharge the battery.

Note: The indicator light will flash rapidly when battery charge is running low.

Using the Battery Charging Station

STEP 1: Slide the 29.6 V Cordless Max Vacuum Cleaner onto the battery charging station.

STEP 2: Connect the mains power adaptor to the back of the battery charging station, aligning the slot on the reverse of the unit with the socket on the upright section of the charging station.

STEP 3: Plug the mains power adaptor into the mains power supply; the indicator light will flash red to confirm that the battery is charging. Once the battery is fully charged, the indicator light will illuminate red and the battery charging station will automatically stop charging, to preserve the lifespan of the battery.

Note: If the indicator light begins to flash rapidly, there has been a malfunction whilst charging. Remove the 29.6 V Cordless Max Vacuum Cleaner from the battery charging station and then repeat steps 1–3.

Using the 29.6 V Cordless Max Vacuum Cleaner

As an Upright Vac

STEP 1: Unplug the 29.6 V Cordless Max Vacuum Cleaner from the mains power supply and then detach it from the battery charging station.

STEP 2: Install the electric floor brush following the instructions in the section entitled 'Assembling the 29.6 V Cordless Max Vacuum Cleaner'.

STEP 3: To turn on the 29.6 V Cordless Max Vacuum Cleaner, press the 'Power' button. The indicator light will illuminate red to signal that the 29.6 V Cordless Max Vacuum Cleaner has powered on.

STEP 4: If a higher speed is required, press the 'Power' button a second time.

STEP 5: Turn off the 29.6 V Cordless Max Vacuum Cleaner by pressing the 'Power' button once more.

As a Handheld Vac

STEP 1: Unplug the 29.6 V Cordless Max Vacuum Cleaner from the mains power supply and then detach it from the battery charging station.

STEP 2: Press and hold the handheld vac release button and then using the handheld vac handle, carefully pull the handheld vac unit away from the 29.6 V Cordless Max Vacuum Cleaner main body.

STEP 3: Install the required attachment by inserting it into the handheld vac suction nozzle. The brush tool is great for use on upholstery, whilst the crevice tool is ideal for those awkward-to-clean areas.

STEP 4: To turn on the 29.6 V Cordless Max Vacuum Cleaner, press the 'Power' button.

STEP 5: If a higher speed is required, press the 'Power' button a second time.

STEP 6: Turn off the 29.6 V Cordless Max Vacuum Cleaner by pressing the 'Power' button once more.

Emptying the Dust Container

It is important to empty the dust container regularly. This will help to preserve suction and prolong the life of the 29.6 V Cordless Max Vacuum Cleaner.

STEP 1: Turn off the 29.6 V Cordless Max Vacuum Cleaner and unplug it from the mains power supply.

STEP 2: Press and hold the handheld vac release button and then using the handheld vac handle, carefully pull the handheld vac unit away from the 29.6 V Cordless Max Vacuum Cleaner main body.

STEP 3: If the 29.6 V Cordless Max Vacuum Cleaner has been used as a handheld unit, remove the attachment by carefully pulling it out of the handheld vac suction nozzle.

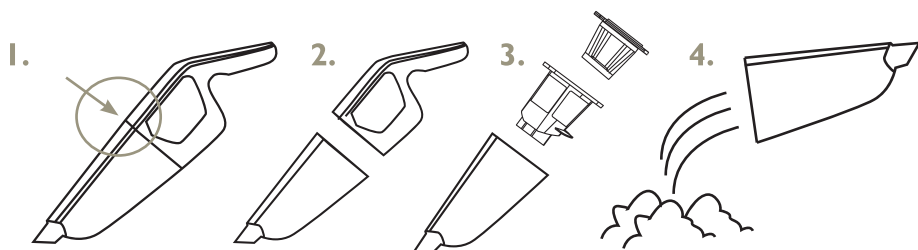
STEP 4: Hold the handheld vac unit with the dust container facing downwards.

Press the dust container release button (1) and carefully remove the dust container from the handheld vac unit (2).

STEP 5: Carefully remove the HEPA filter from the dust container (3). If there is any dust or other residue remaining on the HEPA filter surface, clean it following the instructions in the section entitled 'Cleaning the HEPA Filter'.

STEP 6: Empty the dust container over a bin slowly and carefully to reduce the amount of dust released back into the atmosphere (4).

STEP 7: Reinsert the HEPA filter into the dust container and then refit the dust container to the handheld unit, aligning the locking tab and button with the corresponding slots.



Cleaning the HEPA Filter

It is important to keep the HEPA filter free from dust and dirt, to allow air to flow freely around the 29.6 V Cordless Max Vacuum Cleaner. This will help to preserve suction and prolong the life of the 29.6 V Cordless Max Vacuum Cleaner.

STEP 1: To clean the HEPA filter, hold it over a waste bin, preferably outdoors and gently shake off any dust and dirt. Once the majority of the dust and dirt has been removed, rinse away any residue by running the HEPA filter under cold water. Allow it to dry thoroughly.

STEP 2: Once the HEPA filter has fully dried, refit it, along with the dust container following the instructions in the section entitled 'Emptying the Dust Container'.

Note: It is recommended that the HEPA filter be cleaned at least once a month with clean water to keep the 29.6 V Cordless Max Vacuum Cleaner performing at its best. Do not clean the HEPA filter using detergent. Never use external heat sources, such as a radiator to dry the HEPA filter.

Cleaning the Airflow Chamber

STEP 1: Remove the HEPA filter following the instructions in the section entitled 'Emptying the Dust Container'.

STEP 2: To detach the airflow chamber, pull it away from the HEPA filter.

STEP 3: Rinse away any residue by running the airflow chamber under cold water. Allow it to dry thoroughly.

STEP 4: Refit the airflow chamber by positioning it over the HEPA filter, until it locks into position.

Cleaning the Electric Floor Brush

It is important to clean the electric floor brush on a regular basis to maintain optimum cleaning performance.

The electric floor brush can be removed from the 29.6 V Cordless Max Vacuum Cleaner main body for easy cleaning. Always replace the electric floor brush correctly.

STEP 1: Press the electric floor brush release button and remove the electric floor brush from the 29.6 V Cordless Max Vacuum Cleaner main body.

STEP 2: Push the brush bar release button to release the locking tab on the underside of the electric floor brush.

STEP 3: Lift the brush bar out of the electric floor brush. Using a thin tool, remove any built-up debris from the brush bar, inside the electric floor brush and the air inlet on the top of the floor brush.

STEP 4: After cleaning, replace the brush bar, correctly aligning the ends with the corresponding slots in the electric floor brush.

Note: Do not immerse the electric floor brush in water or any other liquid.

Storage

The 29.6 V Cordless Max Vacuum Cleaner can be stored with ease by using the foldable handle; simply press the foldable handle release button and carefully push the foldable handle down towards the back of the 29.6 V Cordless Max Vacuum Cleaner main unit.

Check that the 29.6 V Cordless Max Vacuum Cleaner is cool, clean and dry before storing in a cool, dry place.

Specifications

Product code: SAL0020

Battery: 29.6 V 2150 mAh Li-ion (included)

36 V DC adaptor (included)

Dust tank capacity: 300 ml

Troubleshooting

Symptom	Possible Cause	Solution
The 29.6 V Cordless Max Vacuum Cleaner will not charge.	The mains power adaptor lead is not securely connected.	Plug the mains power adaptor into the mains power supply, checking that it is switched on and then follow the instructions in the section entitled 'Charging the 29.6 V Cordless Max Vacuum Cleaner'.
The suction is poor.	<p>The suction nozzle is blocked.</p> <p>The dust container is almost full.</p> <p>The HEPA filter is blocked.</p> <p>The electric floor brush and brush bar have a build-up of debris.</p>	<p>Disconnect the attachment from the suction nozzle and remove the blockage.</p> <p>Empty the dust container following the instructions in the section entitled 'Emptying the Dust Container'.</p> <p>Clean the HEPA filter following the instructions in the section entitled 'Cleaning the HEPA Filter'.</p> <p>Clean the electric floor brush and brush bar following the instructions in the section entitled 'Cleaning the Electric Floor Brush'.</p>
The indicator light on the 29.6 V Cordless Max Vacuum Cleaner is flashing rapidly.	<p>The battery is running low.</p> <p>There has been a malfunction whilst charging.</p>	<p>Recharge the battery following the instructions in the section entitled 'Charging the 29.6 V Cordless Max Vacuum Cleaner'.</p> <p>Remove the 29.6 V Cordless Max Vacuum Cleaner from the battery charging station and then repeat steps 1–3 from the section entitled 'Using the Battery Charging Station'.</p>

**UP Global Sourcing UK Ltd.,
Victoria Street, Manchester OL9 0DD. UK.**

If this product does not reach you in an acceptable condition please contact our Customer Services Department by one of the following methods:

Telephone: 0161 934 2240*

*Telephone lines are open Monday–Friday, 9 am–5 pm (Closed Bank Holidays)

Email: customercare@upgs.com

Fax: 0161 628 2126

Please have your delivery note to hand as details from it will be required.

If you wish to return this product, please return it to the retailer from where it was purchased with your receipt (subject to their terms and conditions).

Guarantee

All products purchased as new carry a manufacturer's guarantee; the time period of the guarantee will vary dependent upon the product. Where reasonable proof of purchase can be provided, Salter will provide a standard 12 month guarantee with the retailer from the date of purchase. This is only applicable when products have been used as instructed for their intended, domestic use. Any misuse or dismantling of products will invalidate any guarantee.

Under the guarantee, we undertake to repair or replace free of any charge any parts found to be defective. In the event that we cannot provide an exact replacement, a similar product will be offered or the cost refunded. Any damages from daily wear and tear are not covered by this guarantee, nor are consumables such as plugs, fuses etc.

Please note that the above terms and conditions may be updated from time to time and we therefore recommend that you check these each time you revisit the website.

Nothing in this guarantee or in the instructions relating to this product excludes, restricts or otherwise affects your statutory rights.

The crossed out wheelie bin symbol on this item indicates that this appliance needs to be disposed of in an environmentally friendly way when it becomes of no further use or has worn out. Contact your local authority for details of where to take the item for recycling.



3
YEAR

GUARANTEE*

*To be eligible for the extended guarantee,
go to www.saltercookshop.com
and register your product.

Rechargeable batteries are not included in the extended manufacturer's guarantee
(after the first 12 months).



Find us on 

www.facebook.com/SalterCookshop



Manufactured by:

UP Global Sourcing UK Ltd.,
Victoria Street,
Manchester OL9 0DD. UK.

Made in China.



SALTER®

CD180917/MD000000/V1